

# *Passiflora porphyretica* Masters 1895

## Subgenus *Decaloba* Supersection *Decaloba*

Distribution :  
Mexico to El  
Salvador.

Stem terete,  
densely  
pubescent or  
hirsute;  
stipules  
cordate, 8 to  
10 mm. long,  
5 to 7 mm.  
wide, more or  
less  
chartaceous,  
reddish or  
violet-purple,  
glabrate  
above,  
sparsely  
pilosulous  
below, the  
margin



densely ciliate; petioles 1 to 2.5 cm. long, glandless, densely hirsute; leaves orbicular in general outline (those of the main stem 5 to 10 cm. in length and breadth, those of the branches 2 to 3 cm. long and 3.5 to 4 cm. wide), shallowly 2-3-lobed (lobes obtuse or sometimes acute and aristulate), subrotund or subcordate at base, 3-nerved, reticulate-veined (nerves and veins conspicuous on lower surface), strigillose and slightly scabrous above, densely setulose-tomentose beneath; peduncles in pairs, on the main stem or usually on leafy, axillary branches, the leaves frequently wanting so that the inflorescence appears racemose; bracts similar to the stipules, broadly cordate, 10 mm. long, 8 mm. wide, obtuse, reddish or violet-purple, glabrate without, pilosulous within; flowers about 3 cm. wide; sepals linearoblong, 1.5 cm. long, 3 mm. wide, very densely pilose without, glabrate within; petals linear-oblong, 8 mm. long, obtuse, pink; corona filaments filiform, spotted with purple, in 2 series, the outer filaments 6 to 8 mm. long, the inner 2 mm. long, capitellate; operculum about 2 mm. high, closely plicate, dark red below, pale yellow above, denticulate, slightly incurved; limen erect, minutely pulverulent above; ovary globose, densely white-pilose; fruit globose, about 1 cm. wide, transversely sulcate with 6 to 8 ridges, the ridges rugulose, the axis slightly curved.



# *Passiflora punctata* L. 1753

## Subgenus *Decaloba* Supersection *Decaloba*

Distribution :  
Panama,  
Colombia,  
Ecuador, Peru,  
Bolivia.

Plant glabrous  
throughout;  
stem  
subtriangular,  
compressed,  
striate;  
stipules linear-  
falcate, 3 to 5  
mm. long,  
subpersistent;  
petioles 3 to 6  
cm. long,  
slender,  
glandless;  
leaves  
transversely



oblong in general outline, 2 to 5 cm. along midnerve, 3 to 7 cm. along lateral nerves, 6 to 12 cm. between apices of lobes, truncate and very shallowly 3-lobed at apex or rather conspicuously bilobed (lobes broadly rounded and emarginate, rarely acutish, minutely mucronulate), truncate or subcordate at base, 3 (or obscurely 5)-nerved, thinmembranous, glaucescent beneath; peduncles 5 to 8 cm. long, very slender, articulate about 1 cm. from apex; bracts setaceous, 1 to 2 mm. long, scattered, deciduous; flowers 2.5 to 4 cm. wide; calyx tube long, 0.8 to 1 cm. wide at base, obtuse, hyaline at margin, light yellowgreen and slightly lustrous externally, duller internally; petals oblonglanceolate, 1 to 1.2 cm. long, 4 to 6 mm. wide, recurved, greenish white; corona filaments in 2 series, the outer liguliform, falcate, flat, dilated near middle, 7 to 10 mm. long, up to 1.5 mm. wide (the 4 or 5 filaments opposite the sepals, erect at base, the apices recurved, the 2 or 3 opposite the petals incurved from the base), pale yellow-green at apex, varying from deep purple to pale magenta at center, white at base, the inner series of filaments filiform, 4 to 5 mm. long, capitellate, purplish; operculum membranous, plicate, 3 to 4 mm. high, incurved and minutely denticulate at apex, purple and white; limen a narrow ridge, white, purple-maculate, undulate at margin; gynophore slender, deep purple below, white above; ovary narrowly ovoid or ellipsoidal, brownish- or whitish-puberulent or villosulous; fruit ellipsoidal, 2 cm. long (not fully developed)); seeds ovate, about 3 mm. long, 2.5 mm. wide, transversely 6-sulcate, the ridges rugulose.





# *Passiflora qimbayensis* John A. Ocampo Pérez, Luis E. Forero Pinto and John M. MacDougal 2018

## Subgenus *Decaloba* Supersection *Decaloba*

Distribution : Colombiana.

Herbaceous vine. Stem angulate, 8 to 10 mm in diam, internodes 3.3–5.6 cm long, pubescent, the younger parts finely pubescent, green. Tendrils green, purple and pubescent when young. Stipules setaceous, 4–6 mm long, 1–1.5 mm wide, purple at the base, deciduous. Petioles slender, 2.6 to 3.8 cm long, glands absent, finely pubescent. Leaves 3 lobed-obovate, the central vein length slightly longer than the lateral lobes  $57\text{--}70^\circ$ , lateral vein length 2.9–8.5 cm, sinus only slightly deep, rounded or truncate at apex, mucronulate, margin entire, laminar ocellate-nectaries (6 to 9, mean 7.5) in a V-shaped pattern between the primary veins, glabrous, membranous, not variegated. Peduncles solitary or in pairs, 40.0–55.0 long 3 1.2–1.5 mm wide, pedicel 2.7–3.8 mm long, pubescent. Bracts setaceous, 2.5–2.8 long 3 0.5 mm wide, finely pubescent, green, deciduous. Flowers 3.0–3.8 cm in diam; hypanthium concave-conical at attachment, glabrous, 7.5–7.7 mm in diam, light green; sepals lanceolate, 12–15 long 3 4–5 mm wide, light green beneath, purplish white above; petals lanceolate, 8.0–10.1 long 3 2.9–3.5 mm wide, shorter than sepals, purplish white above and beneath, awn at the apex, 1 mm long, light green; corona filaments in 2 series, filaments of outer series filiform, spreading outward horizontally and slightly reflexed, slightly tortuous near apex, 9.5–10.5 mm long, white, filaments of inner series shorter than the outer filaments, 5 to 8 mm long, vertical, white; operculum plicate, lobulated at the margin, 2.0–2.2 mm long, translucent whitish, with yellow nectary tissue, margin light violet; limen saucer-shaped, 1.5 mm long, margin entire; androgynophore 5.0–6.5 mm long, purple-violet; ovary globose, pubescent, 3.6–3.8 mm long; styles 4.5–5.5 mm long, green, rarely light violet; staminal filaments 4–5 mm long, green, rarely light violet; fruit a berry, 8–12 mm long, 8–11 mm in diam, globose, unripe green, ripe purplish black, skin waxy, unpleasant odor, pubescent; seeds elliptical, 2.5–3.0 long 3 1.5–2.0 mm wide, acute at apex; testa with 5 to 6 transversal grooves, the ridges rugulose, black, 38–40 seeds per fruit, surrounded by a translucent whitish aril.



Luis Fernando Coca



Daniel Mesa



D Mesa



Santiago González Benjumea

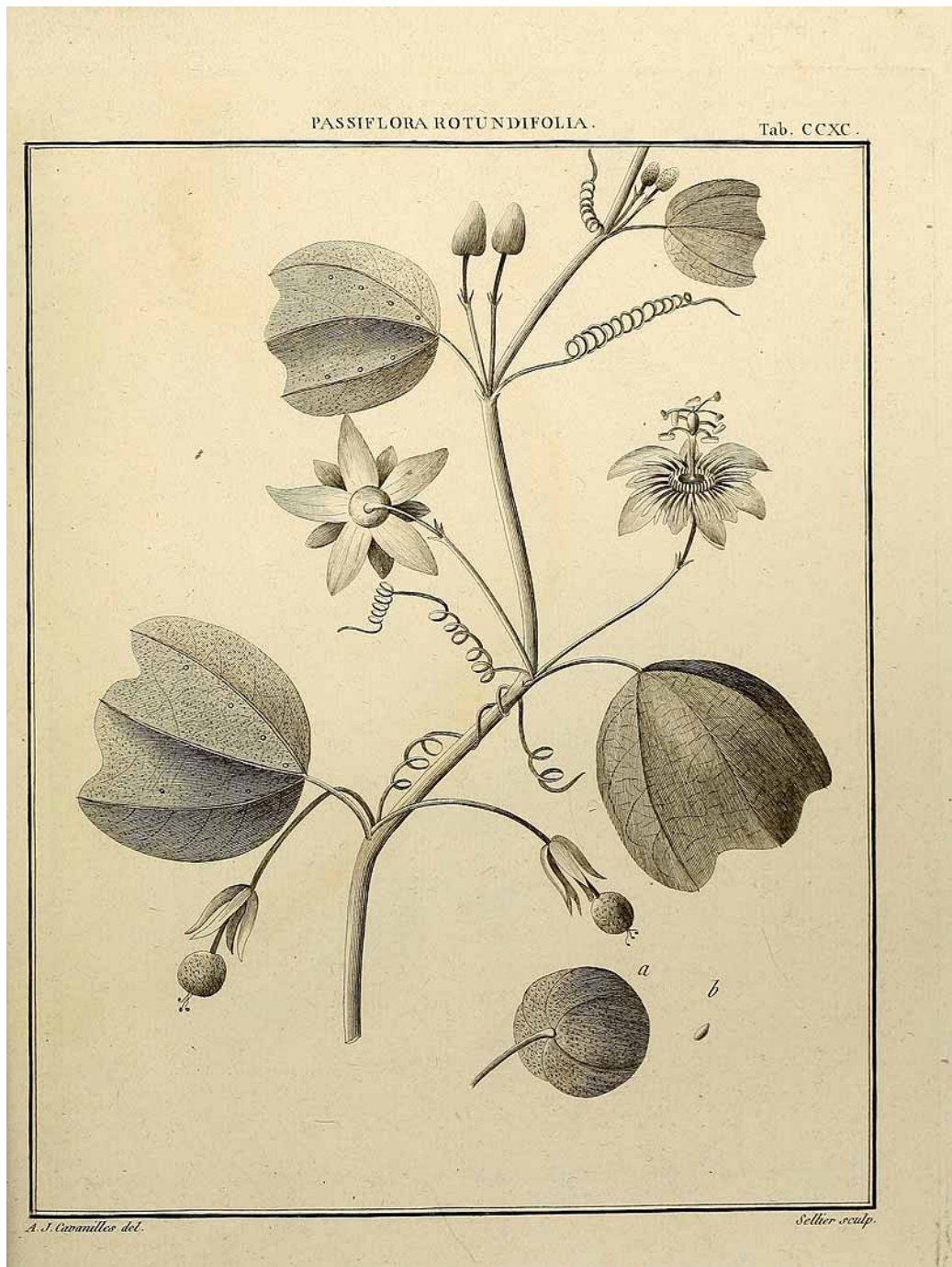
# *Passiflora rotundifolia* L. 1753

## Subgenus *Decaloba* Supersection *Decaloba*

Distribution :  
West Indies.

Plant densely ferruginous-tomentose nearly throughout, or the older portions becoming merely pilosulous; stem angulate; stipules setaceous, 2 to 3 mm. long, deciduous; petioles 1 to 3 cm. long, glandless; leaves suborbicular, 3 to 7 cm. long and wide, obscurely 3-lobed at apex (lobes rounded, mucronulate, the middle one subequalling or shorter than the lateral), rounded or subtruncate at base, 3-nerved, ocellate, membranous or subcoriaceous, minutely pilosulous and dull above,

densely pilosulous beneath, especially on nerves, or ferruginous-tomentose; peduncles usually in pairs, 1 to 2.5 cm. long, articulate near apex; bracts setaceous, 2 to 3 mm. long, at length deciduous; flowers 2.5 to 3 cm. wide, white; sepals linear-lanceolate, 4 to 5 mm. wide at base, obtuse, dorsally green at center, white at margin, white within; petals linear, about one-third as long as sepals, barely 2 mm. wide, obtuse, white; corona filaments in 2 series, the outer narrowly linear or almost filiform, 3 to 4 mm. long, subequal to the petals, flat, white, the inner filiform, 2 to 2.5 mm. long, not dilated at apex, very numerous, green; operculum closely plicate, denticulate at margin; nectar ring a fleshy ridge close to limen; limen annular, similar to but narrower than nectarring; ovary globose, densely brown-pilose; fruit globose, about 1 cm. in diameter.





# *Passiflora poeppigii* Masters 1871

## Subgenus *Decaloba* Supersection *Decaloba*

Distribution: Peru

Plant glabrous throughout; stem slender, subangular, compressed; stipules subulate-falcate, 1.5 mm. long; petioles slender, up to 3 cm. long, glandless; leaves transversely oblong in general outline, 1.5 to 5 cm. along midnerve, 2 to 6.5 cm. along lateral nerves, 3.5 to 10 cm. wide, repand-truncate at upper margin, truncate and subemarginate at base, membranous; peduncles solitary or in pairs, 4 to 6 cm. long, very slender; bracts setaceous, 1 to 1.5 mm. long, borne near middle of peduncle; flowers 1.5 to 2 cm. wide; calyx tube campanulate; sepals broadly ovate, about 1.5 cm. long and 1 cm. wide, subacute, white; petals none(?); corona filaments in 2 series, the outer filiform, 7 to 8 mm. long, the inner

narrowly linear, about 2 mm. long, capitate; operculum plicate, incurved; ovary ovoid.



# *Passiflora santos-ilatasii* B Esquerre-Ibanez 2019

## Subgenus *Decaloba* Supersection *Decaloba*

Distribution: Peru.

Trepadora herbácea, semileñosa cuando longeva, con tricomas de 0.2 – 0.3 mm, curvados generalmente en toda la planta. Tallo estriado, casi aplanado en plantas maduras. Estípulas falcadas, 4 – 5 x 0.7 – 1 mm, verdosas a púrpuras. Pecíolo 1 – 5 cm de largo, angulado, estriado, sin glándulas; lámina 2 – lobada, 1 – 5.2 x 2 – 11 cm, raramente con un lobo inconspicuo central, nervaduras laterales de hasta 10 cm de largo, margen entero, cara adaxial verde o variegada con máculas blancas, rosas a rojizas sobre las nervaduras laterales y a veces la nervadura central, sección entre las nervaduras laterales con 4 – 10 glándulas laminares, amarillentas o a veces rosadas, y con relieve en la cara adaxial, redondeadas, marrónamarillas y nectaríferas en la cara abaxial, desde la base hacia el ápice, siguiendo las máculas. Brácteas 3, libres, enteras, intercaladas, linear-lanceoladas, 3 – 4 x 0.4 – 0.6 mm. Botones florales de hasta 1.8 x 2.5 cm.

Flores en antesis de 5 – 5.5 cm de diámetro, en pares; hipantio corto campanulado, de hasta 6 mm de altura; sépalos 5 oblongo-lanceolados, ensanchados en la base, verdosos con matices rojizos a violáceos abaxialmente, blancos adaxialmente, 1.8 – 2 x 0.4 – 0.6 cm; pétalos 5, oblongo-lanceolados, blancos, 1.5 – 1.6 x 0.4 – 0.5 cm. Corona filamentososa en 2 series, raramente 3, serie más externa de hasta 18 mm de largo, blanca a crema, terete, serie interna de filamentos casi aplanados con ápice irregular con protuberancias, verde, 4 – 7 mm de largo, filamentos libres o a veces fusionados en la base o hasta la mitad, a veces suele aparecer una tercera serie derivada de estos filamentos verdosos. Opérculo plicado, verdoso, rosado y blanquecino, de margen irregular, 5 mm de altura. Limen de 1 – 1.5 mm, incurvado hacia el androginóforo, blanquecino, con máculas moradas dispersas. Androginóforo de hasta 8 mm de altura. Anillo nectarífero inconspicuo. Tróclea ausente. Filamentos estaminales 5 – 6 mm, verdosos a púrpuras, anteras 3 x 5 mm, amarillas a verdosas. Ovario pubescente 7 x 4 mm, verdoso, estilos 3, de hasta 8 mm de largo, verdosos con máculas púrpuras hacia el estigma, estigma crema a amarillento. Fruto baya ovoide– oblongo, inmaduro verde, maduro negruzco, con la parte inferior mamilada (aguda), de hasta 4 x 2.5 cm. Semillas de hasta 4.5 x 3 mm, con un cuerno apical, borde entero, costadas transversalmente con 5 – 6 surcos, base aguda curvada, negras, envueltas en un arilo translúcido a amarillento.



B Esquerre-Ibanez



B Esquerre-Ibanez



B Esquerre-Ibanez



# *Passiflora sandrae* J M Mac Dougal 2006

## Subgenus *Decaloba* Supersection *Decaloba*

Distribution : Panama.

Small to medium vine, minutely puberulent to puberulent throughout, except the laminas adaxially glabrous, and the stem sometimes c. glabrescent below. Stems c. 5-7-angular and grooved -striate. Prophylls 1. Stipules  $1.5-3.5 \times 0.15-0.35$  mm, linear-narrowly triangular, c. falcate, dark; petioles eglandular; laminas  $(2.3- )3.5-6.5 \times 4.3-9.5$  cm, entire, variegated along the lateral veins and sometimes on the center vein (rarely not variegated), abaxially sometimes flushed reddish purple, obovate to very widely obovate (shallowly obdeltate or obtriangular), 2-lobed (rarely c. 3-lobed)  $1/4$  to  $1/2$  the distance to the base (or rarely slightly deeper than  $1/2$ ), the lateral lobes

(acuminate) acute to obtuse (rounded), the central lobe obsolete (rarely present as an obtuse cusp); the lobe angle  $(28- )40-55(-67)^\circ$ , the ratio of laminar width to (central lobe) length  $(0.90- )1.1-2.0(-3.2)$ ; laminar nectaries borne between the main veins, usually edged with dark purple, with 2-4 conspicuously enlarged nectaries at junction of main veins. Peduncles (1)2 per node,  $0.8-2(-2.8)$  cm, uniflorous; bracts  $0.8-2.9 \times 0.08-0.25$  mm, setaceous. Flowers greenish-white to white, the corona basally yellowish green, distally pale green, greenish-yellow, or often light yellow; stipe  $2-5.5$  mm (to  $6.5$  mm in fruit); sepals  $(12- )14-19$  mm, with no projection; petals  $(8- )10-14$  mm; coronal filaments in 2 series, the outer  $(6- )7-10$  mm, slightly dilated distal to the middle, laterally compressed, the inner  $1.5-3.5$  mm; operculum membranous, plicate; androgynophore  $5.5-8$  mm; ovary glabrous. Fruit  $2.2-3 \times 1.5-1.8$  cm, ellipsoid to obovoid, sometimes slightly 3-sulcate, estipitate; arils unknown; nearly mature seeds  $3.8-4.1 \times 2.3-2.5$  mm, transversely sulcate with  $(8)9-11(12)$  sulci.



# *Passiflora rugosissima* Killip 1938

## Subgenus *Decaloba* Supersection *Decaloba*

Distribution :  
Mexico.

Vine, densely  
brunneo-velutinous  
throughout; stem  
terete, 2 to 3 mm. in  
diameter; tendrils  
axillary, stout;  
stipules linear-  
subulate, 7 to 9 mm.  
long, 0.7 to 0.8 mm.  
wide, subfalcate,  
purplish; petioles  
stout, up to 1.5 cm.  
long, glandless;  
leaves 3 to 6 cm.  
along the midnerve, 4  
to 9 cm. along the  
lateral nerves, 5 to 10  
cm. between the  
apices of the lobes,  
bilobed (lobes  
triangular, acute, the  
sinus shallow,  
usually with an  
obscure lobe),  
cordulate at the base,  
coriaceous, strongly  
rugose above, 3-



nerved, reticulate-veined, the nerves and veins elevated on the under surface; peduncles in pairs, 1.5 to 2 cm. long, 2 or 3 times forked, the branches short and the flowers crowded, the ultimate branches or pedicels slender, 1 to 1.5 cm. long; bracts and bractlets similar, broadly ovate to ovate-lanceolate in general outline, in 3's, membranous, green, 7 to 10 mm. long, 3 to 12 mm. wide, irregularly flabellate-lacerate, the segments acuminate; calyx patelliform, up to 5 mm. in diameter; sepals narrowly lanceolate, 9 to 10 mm. long, about 3 mm. wide, subacute, greenish yellow; petals linear, 6 to 7 mm. long, 2 to 2.5 mm. wide, thin, white; corona filaments filiform, in 2 series, subequal, 2 to 2.5 mm. long; operculum membranous, closely plicate, about 1 mm. high; limen a low, annular ridge; gynophore about 5 mm. long; ovary globose, short-villous; styles 3, free to the base; fruit subglobose, about 1 cm. in diameter, lustrous, black, short-villous; seeds ovate, about 3 mm. long and 2 mm. wide, transversely sulcate with about 7 narrow, rugulose ridges.





# *Passiflora complanata* J M Mac Dougal 1975

## Subgenus *Decaloba* Supersection *Decaloba*

Distribution : Mexico.

Tough herbaceous vine to 3–6 m, densely white, short-pubescent or hispidulous throughout with trichomes 0.15–0.5 (0.6) mm, up to 1.2 mm long on buds; stems flattened, narrowly elliptic in cross section, (2.5–)4–6 mm wide in primary growth, stem phyllotaxy 1/2, cernuous at vigorous growing tips, otherwise weakly or not cernuous at apices, fruiting branches often pendent; stipules 3–4.2 x 0.5–1.7 mm, linear triangular to narrowly triangular, abruptly widened at base. Leaves with the petioles 0.9–2 (3) cm; laminae 6–16.5 x 7–18 cm, truncate-widely elliptic in outline, or often truncate to very widely obovate, entire, not variegated, hispidulous on both surfaces with trichomes 0.1–0.4 mm, shallowly 2- or (sub)3-lobed 0.1–0.2 (0.4) the distance to cordate base, the lateral lobes obtuse to acute, always longer than the central lobe, the central lobe obtuse obsolete, or rarely acute, often with a 3 mm mucro, the sinus between lobes lunate, subtruncate, or shallowly 3-lobed with a cusp in the center, the angle between the lateral lobes (30°–)37°–60°; lowermost leaves and juveniles deeply 2-lobed up to 0.65 the distance to the laminar base, the lobes lanceolate, acute; laminar nectaries absent; tendrils curved during development at shoot tip, up to 35 cm long at maturity; prophyll of vegetative bud one, 1.8–4 mm, narrowly triangular to narrowly lanceolate. Peduncles 2 per node (rarely 1 per node on lowermost nodes or on young plants), usually richly branched to 3 or 4 orders (rarely unbranched or branched only 1 order at lowermost nodes or on young plants), (1- to) 7- to 20-flowered, 0.5–1.2 (1.4) cm to the first branch, other branches typically 0.3–1 cm, pedicels 0.6–2 cm; bracts (6–)8–17 x (2.5–)5–12 mm, widely elliptic or ovate to obovate, concave, the apex usually acute and abruptly long-caudate with a 3–5 mm apiculus, margins entire or more usually irregularly shallowly few-cleft or long-toothed, especially near apex, light green, bract position anomalous by exaggerated displacement of each bract distally. Flowers 3–4 cm diam. (to 4.5 cm pressed), green-white or pale green-yellow, often with dull purple centrally, the corona nearly white to cream, the odor mild, fresh, greenish, slightly sweet, with a hint of honey; stipe 0.5–2 mm; hypanthium (floral tube) 9–10 mm diam.; sepals 14–23 x 6.5–10 mm, narrowly ovate-triangular with no projection, light green-yellow abaxially, nearly white to pale green-yellow adaxially; petals 11–18 x 4–6 mm, narrowly ovate or narrowly ovate-oblong, nearly white to green-white to very pale green-yellow; coronal filaments in 2 series, the outer 8–12 mm, ca. 0.6–0.7 mm diam. (fresh), filiform, slightly curved-falcate in distal third, short-attenuate at very apex, cream and unmarked or cream with dull violet or purple on the basal 2 mm, the inner 3–4.5 mm, capillary, apically subclavate, erect; operculum 2–3.5 mm, membranous, plicate, unmarked or with a hint of purple-red; limen edge long-papillate, the floor usually dull or pale purple-red; androgynophore 8–9.5 mm, nearly white except pale purple-red ca. 2 mm at very base, the free staminal filaments 4.5–5 mm, light green, the anthers 3–3.5 mm, the pollen yellow; ovary 2–3 x 1.5–2.9 mm, widely ellipsoid to subglobose, densely white-hirsute, ca. 102 to 138 ovules per flower (N<sup>1</sup>/43), styles 6–7.5 mm, including stigmas. Fruit 13–20 mm diam., subglobose (oblate to widely ellipsoid), estipitate, blue-black, glaucous, lightly pubescent; arils clear-gelatinous, sweet, very fruity, with taste like Concord grape; seeds 2.4–2.9 x 1.4–1.6 mm, black, transversely sulcate with 6 or 7 sulci, the intervening ridges slightly verrucose, the chalazal beak inclined toward the raphe. Germination epigeal.

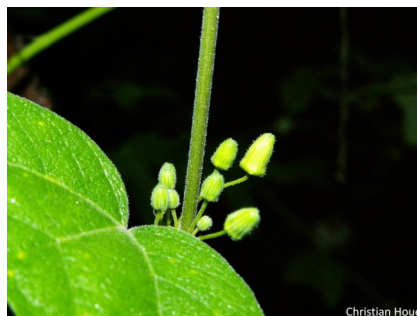
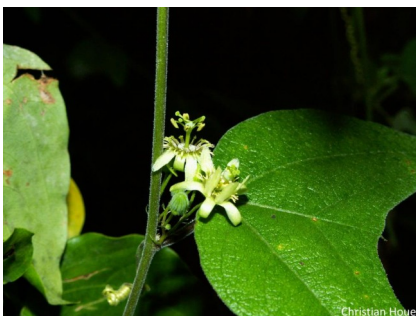


***Passiflora sexflora*** Jussieu 1805  
Subgenus *Decaloba* Supersection *Decaloba*



Distribution : USA (Florida), Greater Antilles, Mexico to Ecuador.

Stem densely hirsute, subangular; stipules linear-subulate, about 5 mm. long; petioles hirsute, 2.5 to 3 cm. long, glandless; leaves 3 to 8 cm. along midnerve, 5 to 12 cm. along lateral nerves, 5 to 11 cm. wide, 3-lobed (middle lobe usually shorter than, or occasionally as long as the lateral lobes), rounded or subcordate at base, entire, membranous, rarely subcoriaceous, hirsutulous and usually setulose above, softly villous or tomentose beneath ; peduncles in pairs, 2-10- flowered, rarely 1-flowered; bracts and bractlets linear-lanceolate, 3 to 5 mm. long, irregularly few-cleft or subentire; flowers 1.5 to 3 cm. wide; sepals lanceolate, 8 to 15 mm. long, 2 to 4 mm. wide, acute, densely hirsute without, glabrous within, white; petals linear, 8 to 10 mm. long, 1 to 1.5 mm. wide, obtuse; corona filaments in 2 series, the outer as long as the petals, white at apex, purple below, those of the inner series half as long as the outer, purple throughout, capitate; operculum membranous, plicate, lavender, the apex incurved; limen annular; ovary globose, densely brown-pubescent; fruit globose or depressed-globose, 6 to 10 mm. in diameter, densely pubescent; seeds obovate, slightly flattened, black, coriaceous, transversely 6-7-sulcate, the ridges rugulose.





# *Passiflora smilacifolia* J M Mac Dougal 1995

## Subgenus *Decaloba* Supersection *Decaloba*

Distribution :  
Ecuador.

Vine, glabrous to glabrescent throughout, or microscopically sparsely pubescent with trichomes 0.04-0.1 (—0.2) mm on shoot tip, nodes, petioles, and under leaf; stem subterete to compressed, sometimes slightly scabrous,



drying striate. Prophylls of the vegetative ramifying bud 1, lateral. Stipules 1.5—3.5 X 0.3-0.5 mm, linear triangular, falcate; petioles 1.4-2.5 cm, eglandular; leaf blade 4.5—9.0 X 1.5—5.5 cm, elliptic, unlobed to obscurely trilobed, 3-nerved, acute to acuminate, base cuneate to rounded-cuneate, glossy and usually variegated along the nerves above; ocellate beneath with 2 conspicuous nectaries at base of nerves and 6—10 others mostly on the distal 2 A, these sometimes raised into conspicuous bumps adaxially; (leaves of juveniles lanceolate, unlobed, acuminate, always variegated; leaves of seedlings 3-lobed, the lobes subequal, variegated, purple beneath). Peduncles 0.4-1.5 cm, solitary or in pairs; bracts 0.5- 1.2 mm, setaceous; floral stipe 0.6—1.2 cm, to 1.4 cm in fruit. Flowers 3.5 cm diam.; sepals 1.6-1.8 X 0.9 cm, broadly triangular, obtuse, light green outside, whitish green inside; petals 1.2-1.3 X 0.5 cm, lanceolate, obtuse, white; corona biseriate, the outer series white with a reddish or purplish band subapically; limen annular; androgynophore 6—8 mm, the area between limen and base of androgynophore puberulous; filaments purple or white; ovary glabrous, green; styles purple; stigma green. Fruits 2.5—3.0 X 2.0-2.7 cm, globose to widely ellipsoid, glabrous. Seeds 4.2—4.5 X 2.8-3.0 mm, obovate, symmetric or very slightly obcampylotropous, transversely rugulose with 6-9 sulci.





# *Passiflora subpurpurea* Niels.1987

## Subgenus *Decaloba* Supersection *Decaloba*

Distribution : Ecuador.

Liana, stem flattened, striate to grooved, pubescent. Leaves 6.3-11.8 x 4.3-9.2 cm ; stipules 6-12 x 2 mm, lanceolate, falcate ; petiole 2-2.9 cm, glandless, tomentose ; Blade ovate, 3-nerved, middle lobe the longest, apices mucronate, base truncate, above glabrescent, below tomentose and purple. Peduncle 22-30 mm, axillary, in pairs ; bracts 10-15 x 5-12 mm, broad ovate, all 3 placed 2-4 mm below the flower, yellowish brown. Flowers 35-40 mm wide ; sepals 19 x 8 mm oblong ovate, obtuse, glabrescent outside, yellow outside, white inside ; petals 14 x 5 mm, lanceolate, obtuse, white occasionally slightly purple outside ; corona biseriate, outer filaments 10 mm, filiform, white with purple bands, inner filaments 4 mm, filiform, capitate, white ; limen 1.5 mm high, annular, fleshy membrane ; operculum plicate, margin entire, greenish ; androgynophore 8 mm ; ovary glabrous to glabrescent. Fruit 1.7-2.1 x 1.4-1.8 cm, subglose ; seeds 3 x 2 mm, 5-6 transverse rugolose sulcate.





# *Passiflora talamancensis* Killip 1922

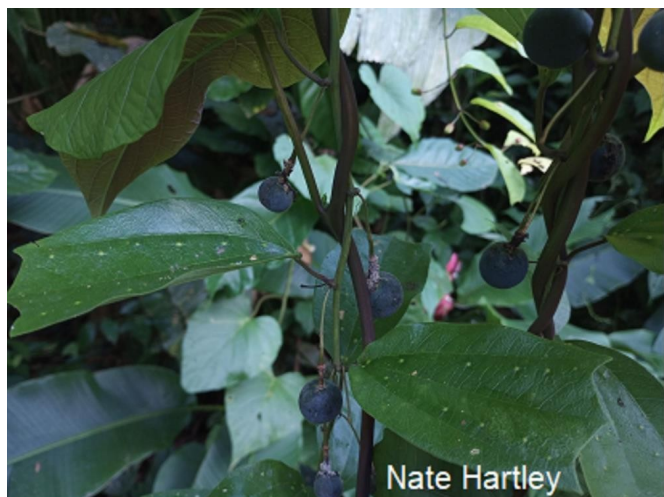
## Subgenus *Decaloba* Supersection *Decaloba*

Distribution :  
Nicaragua to  
Panama.

Stem angulate,  
striate, minutely  
puberulent;  
stipules  
linearsubulate, 3  
to 8 mm. long;  
petioles 1 to 2  
cm. long,  
puberulent or  
tomentellous,  
glandless; leaves  
cuneate-obovate  
or cuneate-oval  
in outline, 6 to  
12 cm. long, 3 to  
7 cm. wide, very  
shortly 3-lobed  
or 3- toothed at  
apex (middle  
lobe normally  
longest, 5 to 10



mm. long, above, dull and puberulent beneath, strongly 3-nerved, ocellate beneath; peduncles slender, 2 to 4 cm. long; bracts setaceous, 2 mm. long, deciduous; flowers 2.5 to 3.5 cm. wide; sepals oblong, obtuse, about 1.5 cm. long, 0.5 cm. wide, green without, white within; petals two-thirds as long as the sepals, white; corona filaments in 2 series, those of the outer series falcate-ligulate, 5 to 7 mm. long, white(?), those of the inner series capillary, 1.5 mm. long, white, purple at tips; operculum close to the corona, membranous, plicate, 2 mm. long, erect, the margin minutely crenulate, slightly recurved; limen annular; ovary globose, densely tomentellous; fruit globose, about 1 cm. in diameter, villosulous; seeds ovate, 5 mm. long, 2 mm. wide, transversely rugose with 6 or 7 minutely rugulose ridges, asymmetrical, the margin bearing a single knob on one side just below the apex.





***Passiflora tatei*** Killip & Rusby 1934  
Subgenus *Decaloba* Supersection *Decaloba*

Distribution :  
Bolivia.

Stem  
trigonous,  
densely  
pilosulous;  
stipules  
narrowly  
linear-falcate,  
7 to 10 mm.  
long, 0.5  
mm. wide,  
purplish;  
petioles 1 to  
2.5 cm. long,  
glandless,  
pilosulous;  
leaves  
oblong or  
suborbicular  
in general  
outline, 3.5  
to 10 cm.  
long, 3 to 7  
cm. wide,



obsoletely 2-3-lobed at the truncate apex, rounded or shallowly cordate at base, entire, 3-nerved, subcoriaceous, lustrous and minutely puberulous above, dull red, densely pilosulous on the nerves and veins beneath; peduncles solitary or in pairs, 3.5 to 4 cm. long, slender; bracts dissitate, 6 to 9 mm. long, setaceous, deeply 2-3-cleft, purplish; flowers 2.5 to 3.5 cm. wide; calyx tube broadly campanulate, 7 to 10 mm. wide at base; sepals linear or lanceolate, about 1.5 cm. long, 0.4 cm. wide, obtuse, greenish white; petals narrowly-linear, 7 to 9 mm. long, 1.5 mm. wide, obtuse, white; corona in 2 series, the outer narrowly liguliform, about 8 mm. long, the inner filiform, 2 to 3 mm. long; operculum closely plicate, about 1.5 mm. high, denticulate, incurved; nectar ring annular; limen cupuliform, about 2 mm. high; ovary globose, densely lanate-villose; fruit globose; seeds ovate-orbicular, transversely sulcate.





# *Passiflora transversalis* Milward de Azevedo 2008

## Subgenus *Decaloba* Supersection *Decaloba*

Distribution : Brazil.

Herbaceous climbers; stems, tendrils, stipules, petioles, adaxial surface of laminae, peduncles, pedicels, bracts and abaxial surface of sepals puberulent; indument on ovary and fruits, pubescent, trichomes unicellular, filiform; stems flat adaxially, rounded abaxially, striate, without little warts. Stipules 1.5–3 mm long, falcate, caudate. Petioles 0.6–3 cm long, eglandular. Laminae papery, 2-lobed, 0.5–4.3 cm along central vein, 2.1–7.8 cm along lateral vein,



3.6–15 cm wide between apices of the lateral lobes, the angle between lateral veins  $100^{\circ}$ – $170^{\circ}$ , apex acute, acuminate, base rounded to truncate, subpeltate, margins entire, lamina nectaries present. Inflorescence uniflorous, peduncles 2.1–9.5 cm long; bracts 2–4 mm long, linear-subulate, apex entire or lobed. Flowers with pedicel 0.5–2 mm long; hypanthium patelliform; sepals 1.1–1.6×0.3–0.6 cm, lanceolate, apex obtuse; petals 6–11×1.5–3 mm, lanceolate, apex acute; filamentous corona in 2 series, the outer 0.6–1.5 cm long, filiform, the inner 2–3 mm long, filiform, apex capitate; operculum 1.5–2 mm long, plicate, apex denticulate; limen annular; androgynophore 0.5–1.3 cm long; staminal filaments 5–7 mm long, anthers 3.5–4.5×1–2 mm; pollen medium to large, prolate-spheroid, 12-colporate, polar diameter 45.0–57.5  $\mu$ m, equatorial diameter 42.5–52.5  $\mu$ m, ornamentation reticulate, bacula absent in the inner of lumina; ovaries 1.5–4×1–2 mm, oblong, ellipsoidal or obovate, styles 4–6 mm long, stigma capitate. Berries 6–14×6–11 mm, globose to subglobose; seeds 2.5–3.5×1.5–2 mm, ellipsoid to obovate, 8- or 9-sulcate, the sulci transverse.



# *Passiflora tuberosa* Jacq. 1804

## Subgenus *Decaloba* Supersection *Decaloba*

Distribution :  
Trinidad,  
Venezuela.

Plant  
glabrous  
throughout;  
stipules  
narrowly  
linear, up to  
5 mm. long,  
falcate,  
coriaceous;  
petioles up  
to 2 cm.  
long,  
glandless;  
leaves  
oblong,  
deeply 2-  
lobed, 4 to 6



Christian Houel

cm. along midnerve, 7 to 12 cm. Along lateral nerves, 5 to 7 cm. between apices of lobes (lobes lanceolate or oblong-lanceolate, obtuse, mucronulate), rounded at base, 3-nerved (a secondary pair of nerves just below sinus), closely reticulateveined, subcoriaceous, sublustrous above, pale beneath; peduncles in pairs, up to 4 cm. long; bracts setaceous, 2 to 3 mm. long; flowers 4.5 to 5 cm. wide, white; sepals oblong-lanceolate, 1.5 to 2 cm. long, 0.6 cm. wide, obtuse; petals ovate-lanceolate, 0.6 to 1 cm. long, 0.3 to 0.4 cm. wide, obtuse; corona filaments in 2 series, the outer strapshaped, 3 to 4 mm. long, 0.8 to 1 mm. wide, slightly clavate at apex, the inner filiform, barely 0.5 mm. long; operculum plicate; limen none; ovary subglobose, glabrous.



Christian Houel



Christian Houel



# *Passiflora viridescens* L K Escobar 1989

*Passiflora ulmeri* Schwerdtfeger 1997

Subgenus *Decaloba* Supersection *Decaloba*

Distribution : Ecuador, Peru.

Herbaceous vine. Plants glabrous with angulate, striate stems. Leaf blades lanceolate, 12.0-12.8 cm long, 5.0-5.4 cm wide, 3 lobed at apex, with erect, triangular lateral lobes ca 1 mm long and mid-lobe ca 1 cm long, truncate to rounded at base, entire at margins, coriaceous; laminar nectaries ocellate, 10- 13, located between major veins on abaxial surface; petioles 1.2-1.3 cm long; stipules falcate, 5-6 mm long, ca 1 mm wide. Peduncles paired, ca 4.5 cm long; bracts 3, dissitate, setaceous, 3-5 mm long, ca 0.5 mm wide. Flowers campanulate, ca 11 cm diam, probably pendant, greenish; hypanthium patelliform, ca 2 mm long, sepals narrowly triangular, 5.5 cm long, 1.1 cm wide at base, membranaceous; petals linear oblong, ca 2.8 cm long, 4-7 mm wide, membranaceous; corona in 1 irregular series, ligulate, with ligules ca 1.2-1.6 mm long; operculum spreading, lacerate to base, ca 0.7 mm long, membranaceous; ovary ellipsoidal, densely pubescent, with straight tan trichomes ca 0.1 mm long. Fruits unknown.





# *Passiflora urnaefolia* Rusby 1896

## Subgenus *Decaloba* Supersection *Decaloba*

Distribution :

Bolivia,  
Argentina,  
Brazil.

Stem glabrous or finely pilosulous; stipules narrowly linear, 2 to 3 mm. long, falcate; petioles slender, up to 3 cm. long, glandless; leaves subtruncately 2-3-lobed, 2 to 8.5 cm. along midnerve, 3 to 10 cm. along lateral nerves, 3 to 10 cm. wide (middle lobe, if present, reduced, the lateral lobes ascending, acute



or rounded), rounded or subtruncate at base, membranous, glabrescent above, glaucescent and finely and sparingly pilosulous beneath; peduncles slender, 2.5 to 4 cm. long; bracts setaceous, 2 to 3 mm. long; sepals oblong, about 1.5 cm. long and 5 mm. wide, obtuse, light blue(?); petals lanceolate, 8 to 10 mm. long, 3 to 4 mm. wide; corona filaments in 2 series, the outer narrowly linear (appearing filiform when dry), united at base into a broad membrane, the free portion 5 to 10 mm. long, the inner filaments capillary, 1 to 2.5 mm. long, borne on the membrane about 2 mm. from the margin; operculum close to the preceding series, slightly plicate, erect, the margin minutely fimbriate; limen annular, fleshy; ovary ovoid, glabrous; fruit globose, 1.2 to 1.5 cm. in diameter, glabrous or pilosulous; seeds ovoid, transversely sulcate, the ridges 4 or 5.





# *Passiflora vespertilio* L. 1753

## Subgenus *Decaloba* Supersection *Decaloba*

Distribution : Venezuela, Guianas, Colombia, Ecuador, Peru, Bolivia, Brazil.

Stem angulate, compressed, striate, often flexuous, glabrous or sparingly puberulent; stipules narrowly linear-setaceous, about 5 mm. long, 0.5 mm. wide; petioles up to 1.5 cm. long, glandless; leaves 2-3-lobed (lobes divaricate, acuminate, the sinus shallowly lunate or wanting, i.e., upper margin of leaf truncate, often undulate), variable in shape, ranging from 6.5 cm. long and 9 cm. wide to 3 cm. long and 10 cm. wide, rounded or subtruncate at base, 3-nerved, ocellate, coriaceous, glabrous and lustrous above, glabrous or slightly puberulent beneath; peduncles solitary or in pairs, 0.5 to 1.5 cm. long, articulate near middle; bracts setaceous, about 3 mm. long, borne below middle of peduncle; flowers up to 5 cm. wide; sepals broadly lance-

oblong, 1.5 to 2 cm. long, 7 to 8 mm. wide at base, obtuse, subcoriaceous, yellowish green; petals oblong, 1 to 1.2 cm. long, about 4 mm. wide at base, obtuse, membranous, yellowish green; corona filaments in 2 series, the outer narrowly liguliform, yellowish green, united at base into a broad, greenish white membrane, the free filaments 1 to 1.5 cm. long, the inner filaments capillary, 3 to 4 mm. long, arising about 2 mm. from the free portion of the outer series, greenish white; operculum membranous, closely plicate, lobulate, white; limen annular; gynophore purple; ovary ovoid, glabrous; fruit subglobose, 1 to 1.5

cm. in diameter; seeds obovate, about 4 mm. long and 2 mm. wide, transversely sulcate.



Hervé Galliffet



John Vanderplank



Christian Houel



Christian Houel



Christian Houel

# *Passiflora subfertilis* J M Mac Dougal 2004

## Subgenus *Decaloba* Supersection *Decaloba*

Distribution : Guatemala.

Vine 2–4 m, minutely puberulent throughout at the shoot tip, or the blades sparsely so, sparsely puberulent to glabrescent below; stem subterete or slightly angular, striate; prophyll of the vegetative bud 1, 1.2–2.0 mm long, narrowly lanceolate, entire, sometimes curved over the bud. Stipules 1.6–2.1  $\times$  0.2–0.3 mm, linear-triangular, falcate, stramineous-necrescent; petioles eglandular; blades 2.8–6  $\times$  5–9.5 cm, in outline obovate to widely obovate, shallowly 2-lobed (rarely sub 3-lobed), the base subtruncate to obscurely widely cordate, the lateral lobes acuminate to acute, the central lobe absent or when present obsolete to obtuse, the angle between the lateral veins 508–728, the ratio of laminar width to central vein length 1.1–2.1, not variegated, the margin entire; laminar nectaries numerous but inconspicuous, borne between the main veins; juvenile leaves in outline deeply depressed obovate, deeply 2-lobed, the base broadly rounded to subtruncate, the lobes very widely spreading, lanceolate to narrowly triangular, acuminate, the angle between the lateral veins 708–1158. Peduncles (1)2 per node, 0.8–1.0 cm, uniflorous; bracts 0.8–2.0  $\times$  0.1–0.2 mm, linear-triangular, early stramineous-necrescent; buds slightly constricted just distal to hypanthium. Flowers white, the corona light yellow; stipe 5–7 mm (to 9 mm in fruit); sepals 13–15  $\times$  6–7 mm, ovate-oblong, pale green abaxially, 6 white adaxially, with no projection; petals 10–12  $\times$  4 mm, narrowly oblong, white; coronal filaments in 2 series, the outer 5–6 mm long, slightly laterally compressed, basally yellow-green, distally light yellow, the inner ca. 2.5 mm, capillary, capitellate, near-white with white to green tips; operculum membranous, plicate; androgynophore ca. 9 mm, slightly purple; ovary glabrous, styles and stigmas green. Mature fruit unknown; immature fruit 2–2.5  $\times$  1.5–1.8 cm, widely ellipsoid to widely obovoid, not stipitate; arils unknown; seeds apparently transversely sulcate.





# *Passiflora stenosepala* Killip 1938

## Subgenus *Decaloba* Supersection *Decaloba*

Distribution :  
Dominica.

Plant glabrous throughout except ovary; stipules setaceous, 2 to 3 mm. long, soon deciduous; petioles 2 to 5.5 cm. long, slender, glandless; leaves transversely ovate, 3 to 5 cm. along midnerve, 3.5 to 6 cm. along lateral nerves, 5 to 8 cm. at greatest width, truncate and shallowly 3-lobed at upper margin (lobes usually mucronulate), rounded or truncate at base, ocellate, membranous, pale beneath; peduncles solitary or in pairs, up to 3 cm. long, slender, articulate just below apex; bracts setaceous, 1 to 1.5 mm. long, borne on upper third of peduncle; flowers up to 7 cm. wide; sepals linear, 2.5 to 3 cm. long, 3 to 4 mm. wide, obtuse; petals linear, 1.5 to 2 cm. long, obtuse, yellowish white; corona filaments in a single series, subdolabriform, about 5 mm. long and 1 mm. wide, yellowish green at apex, purplish otherwise; operculum plicate, minutely denticulate; limen annular, 1 mm. high; gynophore slender, nearly 2 cm. long; ovary ovoid, cano-villosulous.

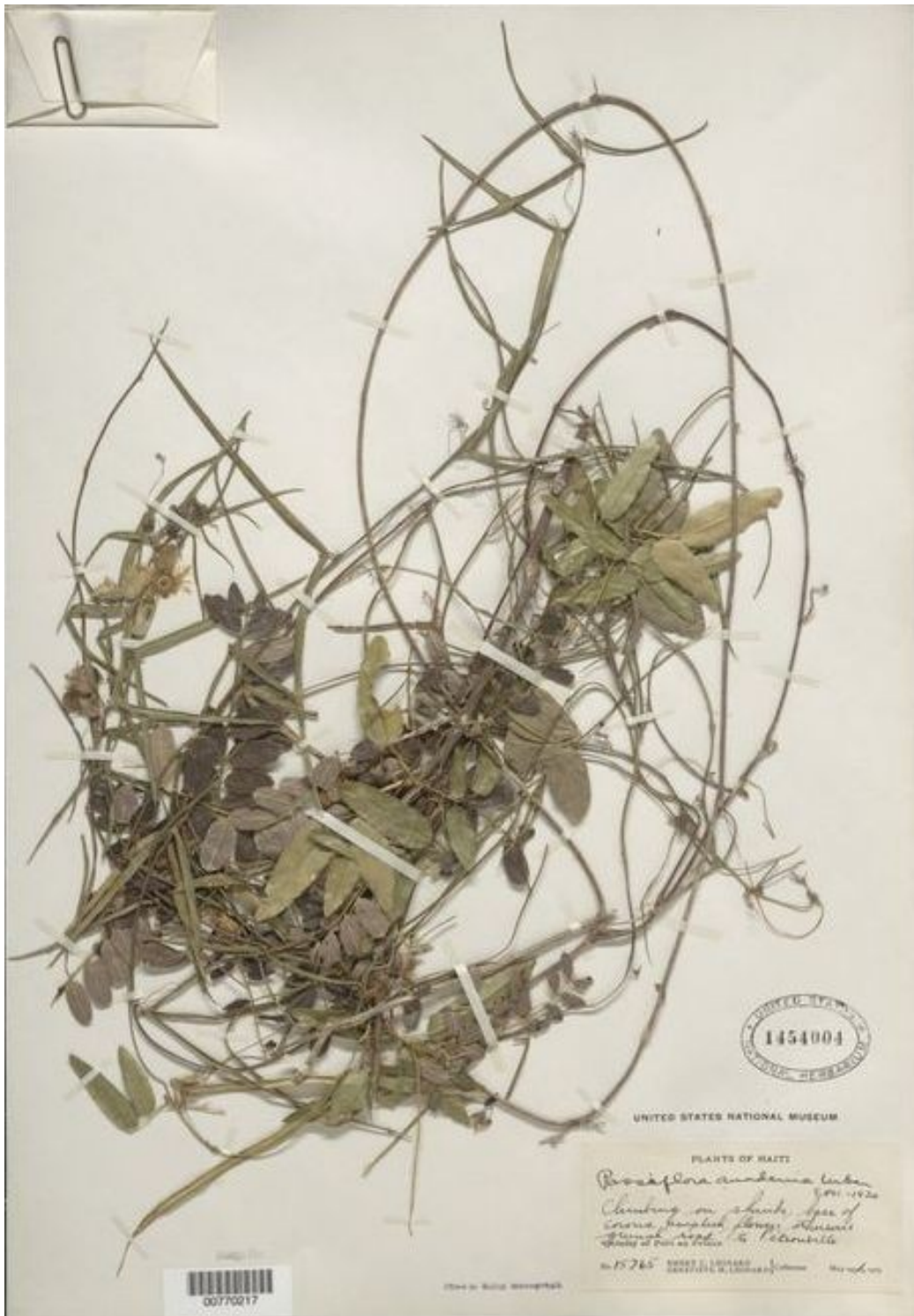


# *Passiflora anadenia* Urb. 1902

## Subgenus *Decaloba* Supersection *Decaloba*

Distribution :  
West Indies.

Stem wiry, subterete, glabrous or minutely appressed-pilosulous; stipules linear-subulate, 5 to 6 mm. long, persistent; petioles 2 to 5 mm. long, glandless; leaves bilobed to within 8 mm. of base (lobes linear, 3 to 7 cm. long, 0.1 to 0.4 cm. wide, obtuse, apiculate, divaricate at 45 degrees, or less, from midrib, a small intermediate lobe or cusp usually present in sinus), cuneate at base, prominently 3-nerved, revolute at margin, coriaceous, minutely hispidulous above, glabrous beneath; peduncles solitary or in



pairs in the axils of the leaves, 8 to 12 mm. long, articulate near apex; bracts linear-subulate, 3 to 4 mm. long, borne below middle of peduncle; flowers up to 2.5 cm. wide, petals lanceolate, 5 to 7 mm. long, about 2.5 mm. wide; corona filaments in 2 series, filiform, the outer 8 to 10 mm. long, the inner barely 1 mm.; operculum membranous, plicate, incurved, inciseddentate, the teeth triangular; limen annular, close to base of gynophore; ovary globose, glabrous; fruit globose, about 1 cm. In diameter.



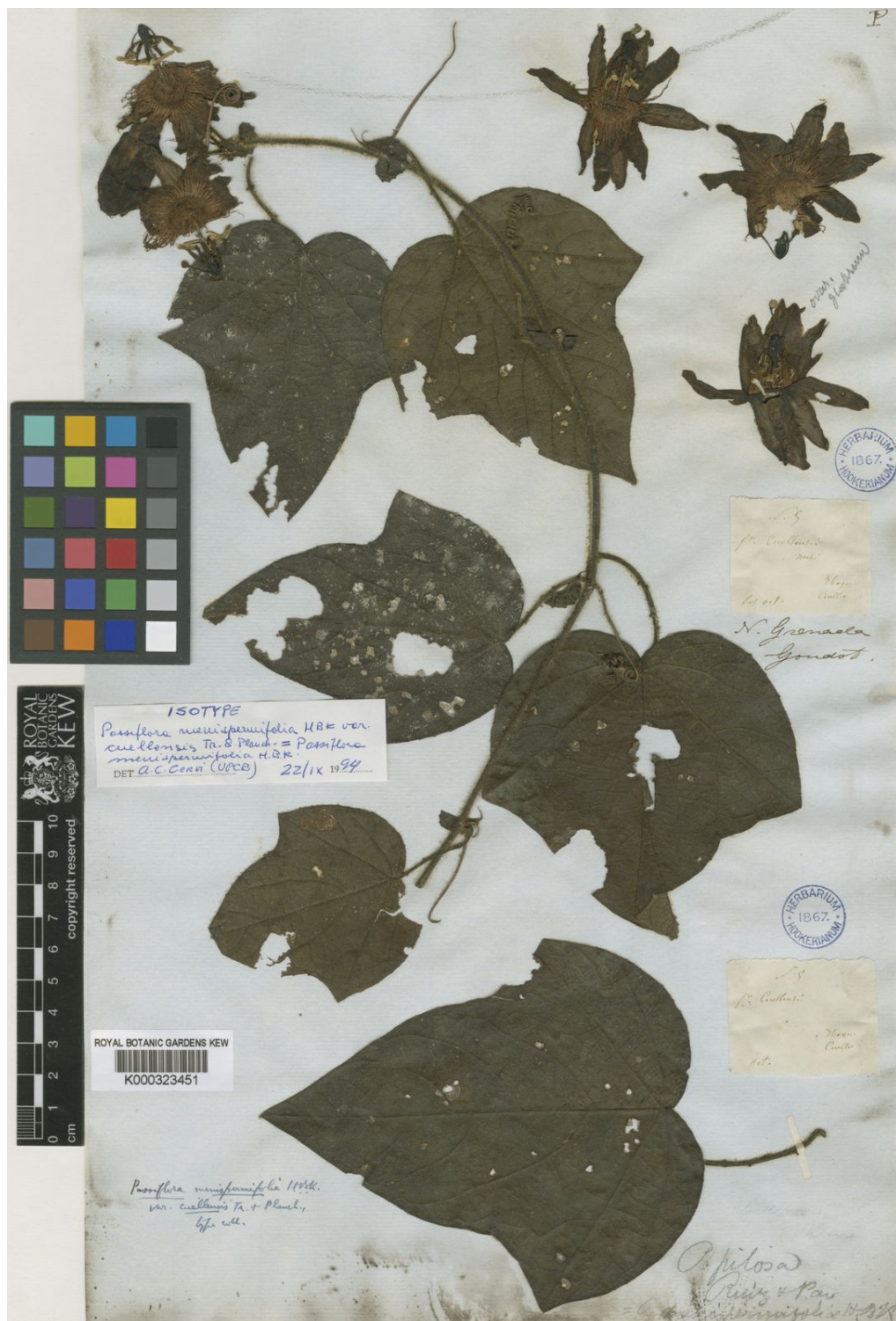
# *Passiflora menispermacea* Trianc & Planch. 1873

## Subgenus *Decaloba* Supersection *Decaloba*

Distribution :  
Colombia.

Plant reddish throughout when dry; stem angulate, sulcate, appressed-puberulent; stipules subulate, 3 mm. long, early deciduous; petioles 1 to 2 cm. long (probably longer), slender, glandless, puberulent; leaves suborbicular or somewhat broader than long, 2 to 4.5 cm. long, 2.5 to 6 cm. wide, shallowly 3-lobed at apex (lobes rounded, mucronulate, the middle 1.5 to 2 cm. wide at base, subequaling or slightly longer than lateral lobes), rounded at base, sparingly ocellate beneath, membranous, glabrous; peduncles 1 to 1.5 cm. long, puberulent; bracts foliaceous, oblong, 1.5 to 2

cm. long, 1 to 1.5 cm. wide, free to the cordate base, obtuse, mucronulate, obscurely serrulate in lower half, sessile, membranous, bright green when dry; sepals linear-oblong, 1 to 1.5 cm. long, about 0.5 cm. wide, obtuse; petals oblong, 0.8 to 1 cm. long, 0.4 to 0.6 cm. wide, obtuse, thinner than sepals; corona filaments in 2 series, the outer ligulate, subequal to petals, dilated above, the inner filiform, about 2 mm. long; operculum plicate, minutely denticulate at margin; limen annular; ovary subglobose, densely rufo-sericeous.



***Passiflora lauana*** J M Mac Dougal 2013  
 Subgenus *Decaloba* Supersection *Decaloba* Section  
*Xerogona*

Distribution :  
 Mexico.

Small  
 perennial  
 herbaceous  
 climber; stems  
 0.7– 1.5 mm  
 diam. at  
 reproductive  
 nodes,  
 strongly  
 pubescent  
 with minute  
 antrorsely  
 curved  
 trichomes less  
 than 0.2 mm,  
 somewhat  
 terete,  
 longitudinally  
 grooved-  
 striate, the  
 ridges  
 rounded, very  
 obvious when



dried; stipules (1.5–)2–3.5 (0.3–)0.4– 0.6 (0.8) mm, linear-lanceolate to lanceolate, falcate, 3- or 4-veined, margins entire or sometimes serrulate or with a tooth, glabrous except sometimes some trichomes on margins, often purple at base, late- necrescent distally. Leaves with petioles 4–8 mm, eglandular, adaxially pubescent, abaxially glabrous; laminae 0.5–2.0 x 1.4–3.7 cm, depressed obovate in outline, entire, variegated on lower leaves with pale stripes along main veins, especially lateral veins, lightly pubescent to nearly glabrous adaxially, with at least a few trichomes on main veins, abaxially glabrous, shallowly bilobed 0.1–0.4 the distance to shallowly cordate to truncate or rarely rounded base, the lateral lobes 0.9–2.6 cm, obtuse to rounded, sometimes truncate, very rarely subacute, the central lobe 0.5–1.2 cm, obsolescent, truncate, retuse, or rarely widely obtuse (often absent, with the result that the length of the central vein is the same as the width of the lateral lobes), the angle between the lateral lobes 72°–125°; laminar nectaries absent; prophylls of vegetative bud two, 0.7–1 mm, ovate, 3-toothed, apically short-caudate. Peduncles (1)2 per node, 0.6– 2 cm, uniflorous; bracts absent or 1 at apex or to 7 mm below the apex, 0.8–1.330.3–0.6 mm, narrowly oblong, irregularly few-toothed at apex or near apex, often appearing ca. 3-toothed. Flowers ca. 1.2 cm diam., green-white or pale green-yellow with purple ring in center, the corona mostly pale yellow; stipe 1.5–2.5 mm; hypanthium (floral tube) ca. 5 mm diam., tinged purple, glabrous; sepals ca. 6–7 x 3–3.5 mm, ca. narrowly ovate-oblong, 3-nerved, with no projection, pale green-yellow adaxially, green-yellow and tinged with purple, especially on the nerves, abaxially, sometimes flushing completely purple-red after anthesis; petals ca. 3.5–5.31.5–2 mm, narrowly ovate-oblong, whitish or pale green-yellow; coronal filaments in 2 series, the outer filaments 3.5–4 mm, long-clavate, apically blunt, yellow-green at the narrowed base and sometimes adaxially flushed with purple, the distal half falcate-spreading and pale to light yellow, the inner series 1–2 mm, capillary, clavate-capitellate; operculum ca. 1 mm high, membranous, plicate, purple; limen floor pale green; androgynophore 3.8–4.2 mm; ovary ca. 2.3 1.8 mm, subglobose to widely ellipsoid, glabrous. Mature fruit not seen, immature fruit from photograph an ellipsoid berry, green, 836 mm, apparently indehiscent.



***Passiflora leptoclada*** Harms 1926  
Subgenus *Decaloba* Supersection *Decaloba*

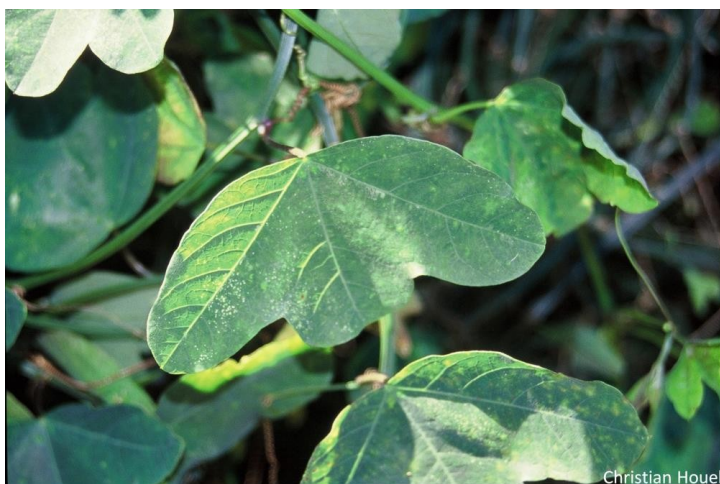
Distribution :  
Peru.

Plant glabrous throughout except ovary; stem slender, striate; stipules linear-setaceous, about 2 mm. long; petioles 1 to 2.5 cm. long, glandless; leaves transversely elliptic or transversely oblong in general outline, truncate or shortly 3-lobed at apex, 1.5 to 4 cm.



Christian Houel

Along midnerve, 2.5 to 4 cm. along lateral nerves, 4 to 7 cm. wide (lobes rounded or obtuse, mucronulate, the middle lobe up to 1 cm. long or almost wanting), subtruncate, cordulate, or rounded at base, ocellate, membranous; peduncles in pairs, 2 to 3 cm. long; bracts subulate, 1 to 1.5 mm. long; flowers up to 3 cm. wide; sepals narrowly oblong, 1 to 1.2 cm. long, 2 to 3 mm. wide, obtuse; petals similar to sepals, about 7 mm. long, 1 to 1.5 mm. wide; corona filaments in 2 series, the outer filiform, subequal to the sepals, the inner linear, 3 to 4 mm. long, broadly capitate and emarginate; operculum membranous, closely plicate, denticulate; limen annular; ovary ovoid, densely cano-tomentulous; fruit globose, about 1.5 cm. in diameter, pilosulous; seeds transversely sulcate.



Christian Houel



Christian Houel

# *Passiflora nana* J M Mac Dougal & Boris Esquerre-Ibanez 2020

## Subgenus *Decaloba* Supersection *Decaloba*

Distribution : Peru.

Diminutive climbing vine 1–2.2 m long, densely long pilose or softly hispidulous throughout with straight slender pellucid white rather stiff trichomes (0.5–)1.5–3.5(–4.8) mm long. Stem with cernuous growing apex, subterete, ca. 2 mm diam., striate, with most trichomes at least 2.0 mm long. Prophyll of axillary vegetative bud 1, lanceolate, long acuminate, ca. 1–1.8 × 0.5–0.7 mm, ovate-lanceolate, long acuminate, with trichomes abaxially, drying reddish brown. Stipules 3.0–6(–8.5) × 0.3–1.0 mm, linear to linear triangular, straight or subfalcate, spreading, green, adaxially glabrous, abaxially lightly pilose. Petioles (1.2–)1.5–3(–3.8) cm, glandless, green or flushed with purplish red; laminae 1.6–4.5 long (central vein length) × 2.0–6.4 cm wide, depressed to widely depressed obovate in outline, ratio of lamina width/length 1.2–1.6, broadly rounded to rounded slightly cuneate at the base, often flushed with reddish purple beneath, entire, conspicuously ciliate at the



BP Esquerre-Ibañez

entire margin with straight trichomes 1–3 mm long (mostly ca. 2 mm long), very shallowly (2)3-lobed, lateral veins equal to central vein, or slightly longer, ratio of lateral/central vein length 1.0–1.3(–1.8), lateral lobes rounded (rarely subtruncate or slightly retuse), central lobe very broadly or obtuse-rounded to more commonly truncate, occasionally slightly or obscurely retuse, or absent, the angle between the lateral lobes veins (51°–)55°–70°(–74)°, laminar nectary glands (2 to) 4–6 per leaf, 0.3–0.8 mm diam., with 2 in axils of the lateral and central veins, but not completely filling the axils, and 0–4 additional glands between the primary veins in proximal ½ (to 2/3) of the leaf. Peduncles (1)2 per node, 8–20(–30) mm long not including floral stipe, slender, uniflorous; bracts 1 or 2 (rarely 3), 1.3–2.5 × 0.1–0.2 mm, setaceous to linear, drying dark, at or within 3(–8) mm of the apex of the peduncle, the most proximal bract noticeably larger; floral stipe ca. 1.5 mm (to 4 mm in fruit). Flowers ca. 1.5 cm diam., light greenish to pale greenish yellow, with a purple operculum; hypanthium 3.0–5.7 mm diam., concave 1.2–1.5 mm deep at insertion of stipe; sepals (7–)9–11.5 × (2.0–)2.5–3.5 mm, narrowly triangular-oblong or lanceolate-oblong, obtuse, sparsely pilose abaxially, very pale yellowish green to near white, completely reflexed at full anthesis; petals ca. 2.5–4.4 × 1–1.5 mm, ovate-oblong to narrowly ovate-oblong, white; coronal filaments in 2 series, the outer ca. 33 in number, (3–)4.5–6.5 × 0.25 mm, filiform, pale greenish yellow basally, pale to light dull yellow distally, united and adnate to sepals at very base, spreading widely and strongly reflexed at full anthesis, slightly curved toward the tips; filaments of the inner series 1.6–1.8 mm long, capilliform, slightly clavate apically, erect and close to operculum, pale purplish; operculum 1.5–2.0 mm high, incised 1/4–1/3 its length, ca. 4.5 mm outside diam., light purple to violet, membranous, plicate, erect, slightly incurved over limen and nectary, the margin minutely fimbriate/ long-papillose, white; limen floor (tissue between limen edge and base of androgynophore) yellowish green, the edge only slightly raised, 2.8–3.3 mm diam., yellow nectary present but raised nectar ring (annulus) absent; androgynophore (3.5–)3.9– portions (2.5–)4–5 mm long, greenish, unmarked, anthers ca. 1.7–2.0 × 1 mm, greenish, unmarked; ovary ca. (1.5–)3 × (1–)1.5–1.8 mm, ellipsoid, green, densely white pilose to hispid with white antrorse straight trichomes (2–)2.5(–3) mm long; styles (4–)5–5.5 mm long including capitate stigmas, glabrous, greenish or with trace of reddish purple distally; stigmas 1.3–1.5 mm diam. Fruit a berry 26 mm long (including a 3–4 mm long stipe) × 13 mm, ellipsoid, acutely tapered at proximal end and with a short conical stipe, conical at apex, lightly pilose, nearly mature fruit yellowish green; seeds 4.0–4.4 × 2.5–2.8 mm, 1.3–1.4 mm thick, obovate, ca. symmetric around long axis, dark brown to nearly black, transversely sulcate with 7 to 8 sulci, the ca. 8 ridges rugulose, micropylar end acute, chalazal end ca. 90°, with a slight antiraphal crest or ridge ca. 0.2 mm wide, number of seeds per fruit ca. 21–25 (n=1).



BP Esquerre-Ibañez



BP Esquerre-Ibañez



BP Esquerre-Ibañez



# *Passiflora pardifolia* J Vanderplank 2006

## Subgenus *Decaloba* Supersection *Decaloba*

Distribution : Brazil (Minas Gerais).

*Vine* slender, terete, puberulent, up to 2.5 m high. *Roots* fibrous. *Tendrils* terete, 11 – 14 cm long. *Stipules* linear-falcate, 3– 4 mm long. *Petiole* terete, eglandular 1.0 – 7.5 cm. *Leaves* mostly glabrous, bilobed, adaxially variegated along the main veins, variegations pale green often appearing silver, central vein 1.5 – 5.5 cm long, lateral veins 3.0 – 9.0 cm long, main veins abaxially puberulent, the angle between the lateral lobes 50° – 70°; leaf laminar glands 6 – 30, adaxially, bright yellow 1 – 2 mm diameter, and on vigorous fertile shoots mammillate 1 – 3 mm high; abaxially glands are nectariferous, dull yellow with a pale brown rim, (the glands are only



Yero Kuethe

nectariferous when the daytime temperature is above 16°C.) *Peduncles* in pairs, terete, 4.0 – 5.0 cm long. *Bracts* three, persistent, linear, 2.0 – 2.5 mm long, deep purple. *Flowers* white and pale dull mauve, 4.0 – 4.4 cm in diameter, held horizontally or sub-horizontally at anthesis, odourless. *Hypanthium* shallowly campanulate, 10– 12 mm diameter. *Sepals* oblong-lanceolate, reflexing 30° – 40° at anthesis, 14 – 17 × 5–7 mm; adaxial surface white with minute mauve speckling towards the centre and edges; abaxial surface dull green with three mauve or purple main veins and white tinted with mauve margin. *Petals* oblong-lanceolate with distal fringe, 9 – 11 × 4.0 – 4.5 mm, pale mauve and white above and below, reflexing 30° – 40° at anthesis. *Corona filaments* in two series, the outer falcate, approximately 52 in number, 1.4 – 1.6 cm long, white with one or two pale mauve bands towards the centre, the inner series erect, filiform, approximately 80– 100 in number, white, 2 – 3 mm high; anther-corona clearance 6–7 mm. *Operculum* plicate, filiform, pale green. *Limen* deep purple warty ring. *Androgynophore* 10 – 12 mm, pale yellowy green and tinged with mauve for 2 – 3 mm above base. *Stamens* pale green, 6.0 – 8.0 mm. *Pollen grains* yellow, globose, geminate and heterocolpate, anastomosing at the poles, with six pairs of colpi at the equator. *Ovary* globose, 1.8–2.8 mm diameter, sparsely appressed pilose. *Style* very deep purple, 6 mm. *Stigma* olive green, 1.5 – 2 mm diameter. *Fruit* a black berry, globose or sub-globose; exocarp thin, weak; mesocarp green and fleshy in unripe fruit, becoming colourless and gelatinous and greatly reduced as fruit becomes fully ripe; endocarp thin, translucent. *Arils* clear, gelatinous, faint odour with little or no taste. *Seeds* asymmetrical, ovate or broadly ovate with smooth margin, 3.5 – 4.1 mm × 2.0 – 2.5 mm × 0.9 – 1.3 mm, raphe prominent, predepressed triangular chalazal beak, cross-section convex, surface with 6–8 transverse verruculose sulcate ridges, dark brown or charcoal brown; seeds per fruit 5 – 39; mass of 100 seeds 0.592g. *Germination* epigeal.



MAURITIUS VECCHIA PINKIT A.D. MMXIV ©



Cody Hinchliff

# *Passiflora pilosa* Ruiz & Pav. Ex DC. 1824

## Subgenus *Decaloba* Supersection *Bryonoides*

Distribution :  
Mexico,  
Guatemala.

Plant hispid throughout with stiff, pellucid, more or less hooked hairs; stem angulate, terete, grooved; stipules broadly cordate-ovate, 1.5 to 1.7 cm. long, 1.5 cm. wide, strongly nerved, minutely serrulate or entire; petioles 2.5 to 3.5 cm. long,



Alexis López Hernández

biglandular, the glands clavate, 2 mm. long, 1 mm. in diameter at apex, borne on the upper third of the petiole; leaves 5 to 11 cm. long, 6 to 14 cm. wide, deeply 3-lobed (middle lobe ovate or ovate-lanceolate, acute or subacute, slightly exceeding the ovate, acute lateral lobes), 3-5-nerved, the nerves flattened, the veins conspicuous, irregularly repand-dentate, hispidulous, cordate-cuneate at the basal sinus; peduncles solitary or in pairs, 2 to 3 cm. long; bracts 3, narrowly ovate to oblanceolate, 5 to 6 mm. long, 1.5 to 3 mm. wide, acute, densely ciliate, 2 situated at the base of the flower, the third about 4 mm. lower on the peduncle; flowers 3.5 cm. wide; sepals oblong-lanceolate, 2 cm. long, 0.7 cm. wide, slightly concave at apex, deep red and hispid without, paler, red-streaked, and glabrate within; petals oblong-lanceolate, 9 mm. long, 3 mm. wide, obtuse; corona filaments in a single series, narrowly linear, 1.6 cm. long, 0.6 mm. wide; operculum approximate to the corona, membranous, white, slightly plicate, 4 mm. high, the margin very minutely fimbriate, incurved; nectar ring annular; limen membranous, white, 1 mm. high, incurved ; ovary ovate, tapering at apex, glabrous.



Yero Kuethé



Aldo Zaldivar



Aldo Zaldivar



# *Passiflora andicola* B Esquerre 2020

## Subgenus *Decaloba* Supersection *Decaloba*

Distribution : Peru

Herbaceous vine, 2-4 m, pubescent with curved trichomes 0.1-0.3 mm, stem striate, stipules 3-5 × 0.4-0.6 mm, linear, falcate. Petiole glandless, 1-4 cm. Lamina 2-3 lobed, 3-7.5 × 2-6 cm, 2-11 conspicuous laminar nectaries. Peduncles 1-4 cm, in pairs or solitary. Bracts linear-lanceolate, scattered, 2-4 × 0.4-0.6 mm. Flowers 4-4.3 cm in diameter. Sepals oblong-lanceolate 1.7-2 × 0.6-0.8 cm, reddish to greenish abaxially, white adaxially. Petals oblong-lanceolate 0.7-1 × 0.2-0.3 cm, white. Corona in 2 series, outer series up to 5 mm, liguliform, curved at apex, sometimes dilated, white with 2-3 purple bands, inner series 3-4 mm, white to greenish, flattened 1-2(3) clavate at apex. Androgynophore 10 mm. Ovary 2-3 × 2.5-3.5 mm, globose, pubescent, greenish. Globose berry 1-1.5 × 1-1.5 cm, pubescent, green when unripe, black when ripe; seeds obovoid, black, transversely 4-5 surcate, 3-3.3 × 2-2.5 mm.



# *Passiflora chrysosepala* Schwerdtfeger 1997

## Subgenus *Decaloba* Supersection *Decaloba*

Distribution :  
Ecuador.

Herbaceous  
vine ;  
subglabrous,  
but all parts  
of the plants,  
except for  
the flowers,  
minutely  
pubescent  
with white  
trichomes  
0.1-0.2 mm  
long ; stem  
striate ;  
stipules  
falcate, 0.5-  
0.8 cm,  
drying  
black ; leaf  
blades entire,

ovate to elliptic, 8-17 cm long, 6-12 cm wide, three lobed with middle lobe much exceeded by lateral lobes to almost lacking, truncate to shallowly cordate at base ; lateral lobes 1-2.2 cm, sharply pointed ; adaxial leaf surface glabrescent becoming somewhat shiny, with the inconspicuous indumentum persistent mainly on the abaxial surface ; petiole up to 5 cm, glandless, leaf blade with 4-8 big nectaries in the axils of the major veins at leaf base and someless conspicuous nectaries in the distal part of the leaf ; peduncles single or in pairs, 5-9 cm long, with setaceous bracts 0.4 cm long scattered above the middle ; flowers 6-7 cm diameter, white, expanded, borne upright, sepals coriaceous, 2.8-3.2 cm long, 1 cm wide, golden brownish abaxially, white adaxially ; petals subequal to sepals, white ; corona in two series, filaments of the outer row 0.4 cm long, greenish white ; operculum plicate, 0.3 cm minutely pubescent when young, soon becoming glabrous ; fruit orbicular, 4.5 cm diameter, bright yellow.





# *Passiflora pendens* J M Mac Dougal 1994

## Subgenus *Decaloba* Supersection *Bryonoides*

Distribution : Mexico.

Climbing vine up to 7 m long, sparsely pubescent throughout with 0.12-0.30(-0.50) mm long uncinuate trichomes ; roots apparently not thicker than stem ; stem terete ; stipules 6.0-7.5 mm long, 3.5 mm wide, ovate-auriculate and caudate, the margin entire or rarely with 1 or 2 teeth, ciliolate ; petioles 7-9 cm long, biglandular 0.90-0.95 the distance to the apex (usually within 7 mm of lamina, the nectaries 2-3.3 mm long, 1.0-1.5 mm in diameter, hemispherical and short-stipate, the nectariferous surface borne abaxially ; laminae 7-9 cm long, 9.5-11.5 cm wide, 3-lobed 0.25-0.40 the distance to the cordate base, the lobes triangular or triangular-ovate, acuminate to caudate to caudate or rarely acute, the angle between the lateral lobes 115°-125°, ratio of lateral to central lobe lengths 0.75-0.80, margins proximal to apices of lateral lobes denticulate with ca.6 teeth ; laminar nectaries 0.4-0.8 mm in diameter, 2-4 per sinus and rarely 1 or 2 present proximal to lateral lobes, 1.5-4.0 mm from margin, sessile ; juvenile leaves 3-sub-5-lobed 0.60-0.75 the distance to the base, with slender, bearing bracts scattered 0.50-0.80 the distance to the apices ; bracts 1.9-3.1 mm long, 0.9-1.2 mm wide, obovate or obtrullate in general outline, 3-cleft, the lobes acuminate, narrowly cuneate at base ; flower buds conical (triangular when pressed), the apex

acuminate ; flowers 7-8 cm in diameter, not stipitate, pendent, with sweet odor ; hypanthium 15-18 mm in diameter ; sepals 27-35 mm long, 15-17 mm wide, triangular, acuminate and rounded at very apex, not carinate or corniculate, greenish abaxially, whitish adaxially ; petals 25 mm long, 8-10 mm wide, oblong-lanceolate, apex rounded, white ; coronal filaments ca. 55-57 in number, in 1 series, 25 mm long, white with 6-7 violet bands ; operculum 5.0-6.0 mm long, whitish, with violet in the distal half ; limen whitish, not spoyyed ; staminal filaments connate 12-13 mm along androgynophore, the free portions 5.0-6.0 mm long, not speckled ; anthers 6.6 mm long, the connective speckled reddish brown abaxially (when dried) ; ovary 6.5 mm long, 2.8 mm wide, ellipsoid, densely pubescent with 0.12-0.16 mm long uncinuate trichomes ; styles 8.5 mm long including stigmas ; stigmas 2.4-3.0 mm in diameter ; fruit [observations based on 3 fruits with mature hybrid embryos produced in the greenhouse by fertilization with pollen from *P. adenopoda*] 5-7 cm long including stipe less than 7 mm long, 4-5 cm in diameter, widely ellipsoid to slightly obovoid, apex obtusely conical, lightly and finely hispidulous ; exocarp becoming flushed with pale reddish purple to purple when mature ; mesocarp whitish ; arils translucent orange-yellow, with a perfumed fruity odor ; seeds 4.7-4.9 mm long, 2.7-2.8 mm wide, 1.3-1.5 mm thick, obovate, reticulate-foveate with 27-33 (-35) foveae per side ; germination unknown ; chromosome number unknown.



# *Passiflora bicrura* Urb. 1902

## Subgenus *Decaloba* Supersection *Decaloba*

Distribution : West Indies.

Stem strongly compressed, striate, purplish with age, glabrous or minutely pilosulous; stipules linear-subulate, 2 to 4 mm. long, often glandular-puberulent; petioles 5 to 10 mm. long, glandless; leaves bilobed to middle, 2 to 4 cm. along midnerve, 5 to 7 cm. along lateral nerves, up to 7 cm. between apices of lobes (lobes oblong-lanceolate, 1.5 to 2.5 cm. wide, broadly rounded at apex, the sinus rounded at base or with a short or more or less developed

intermediate lobe), rounded at base, subcoriaceous, lustrous and glabrous above, dull and pilosulous beneath, especially on the nerves and veins; peduncles solitary or in pairs, borne on short, leafless branchlets, 0.8 to 3 cm. long, slender, articulate just below apex; bracts linear-subulate, 2 to 3 mm. long, slightly glandular-puberulent, borne near base of peduncle, persistent; flowers up to 2 cm. wide, greenish yellow; sepals ovate-lanceolate, 8 to 10 mm. long, about 4 mm. wide, slightly keeled near apex; petals 5 to 7 mm. long, 4 mm. wide, obtuse, membranous; corona filaments in 2 series, filiform, the outer about 8 mm. long, the inner 2 to 3 mm. ; operculum membranous, plicate, dentate, the teeth triangular; limen annular; ovary subglobose, glabrous.





# *Passiflora ketura* J M Mac Dougal & S Tilled 2022

## Subgenus *Decaloba* Supersection *Decaloba*

Distribution : Peru.

Small vine to 3 m long, minutely and sparsely to lightly puberulent or pilosulose throughout, sometimes densely appressed puberulent near shoot tip, the trichomes 0.1–0.2 mm long, except the laminae adaxially sparsely puberulent and glabrescent with age, the stem sometimes glabrescent below, the stipules glabrous to slightly puberulent, and the ovary glabrous; stems drying subangulate or subtriangular and often conspicuously striate, sometimes glabrescent below, flowering internodes (1.0–)2–4(–4.6) cm long, green, flushed purplish at the node complex; prophyll of the vegetative bud single, 1.3–3.0 × 0.7–1.5 mm, ovate to widely ovate, the apex acuminate to long-acuminate, the margin with (1–) 2–3 (–4) conspicuous teeth per side. Stipules 2.0–3.5 × 0.3–0.7 mm, narrowly lanceolate, long-acuminate, subfalcate, glabrous to slightly puberulent, purple with stramineous tip; petioles 0.7–2(–2.8) cm long, eglandular; laminae wider than long, in outline (very widely obovate to) depressed obovate, widest near the apex, (1.3–)2–4.2 cm long along central vein, (3.5–)4.5–7.5(–9.2) cm wide, the ratio of laminar width to central vein length 2–3(–3.5), adaxial surface sublustrous and less puberulent, glabrescent with age, sometimes variegated whitish adaxially along the lateral veins and rarely with a pale trace on the center vein, the laminar base rounded, obscurely to slightly cordate, 2-lobed (1/8 to) 1/4 to 1/3 (to 1/2) the distance to the base, the sinus of the bilobed leaf often obtusely subangular and sometimes slightly emarginate at central vein, sinus rarely abruptly rounded or crescent shaped, laminar margin entire, lateral lobe veins (1.8–)2.5–4.8(–5.0) cm long, ratio of lateral/central vein length (1.0–)1.6–2.3(–2.7), the angle between the lateral lobes (58°–)68°–85°(–95)°, the lateral lobes ovate to ovate-lanceolate, the apices obtuse to acute and rounded at very tip, the central lobe absent; laminar nectaries (3 to) 4 to 9 (to 11) per leaf, with 3 to 9 borne between the main veins, and sometimes (0 or) 1 or 2 nectaries borne outside (exmedial) the main lateral veins near the junction of main veins, the glands 0.5–1.0 mm diam., patelliform or shallowly crateriform, their edges sometimes purplish and the whole gland ringed by a pale zone or halo. Peduncles (1)2 per node, (1.0–)1.2–2.2 cm long not including pedicel (floral stipe), uniflorous; bracts 3, 1.3–2.7 × 0.3–0.7 mm, at or within 3 mm of the apex of the peduncle, narrowly obtrullate, cuneate, tridentate (subentire or obscurely toothed to 5-toothed). Buds (ovate-) oblong, bluntly rounded, yellow (*Wurdack* 485); flowers white, pedicel 1.5–3.5(–4.5) in both flower and fruit, hypanthium 7–12 mm diam., concave at point of attachment; sepals 11–14 × 4–5 mm, ovate-triangular to broadly lanceolate, apically rounded with no subapical projection, color white adaxially; petals 6.5–8 × 2.1–2.9 mm, narrowly ovate or lanceolate, the apex rounded or praemorse, white; coronal filaments in 2 series, the outer ca. 50 in number (N=1), 4.5–6 mm long, filiform but slightly laterally compressed basally and slightly tapering to the apex, adnate to base of sepals ca. 1 mm, whitish with dark purplish color at base; the inner series 2.2–3 mm long, capillary, purplish, capitate or slightly lobulate at tips; operculum ca. 2 mm long, membranous, plicate, pale or whitish with slight purplish flush at base, the margin fimbriate; nectary annulus not seen; limen ca. 3.5 mm diam.; androgynophore 8–9 mm long, color unknown, dark; staminal filaments 5.5–6 mm long, purplish, anthers 3 mm long; ovary 1.8–2.5 × 1.8–2.5 mm, subglobose, glabrous, drying dark; styles 6–7 mm long including capitate stigmas. Fruit a berry, 9–10 mm long, subglobose, stipitate, purplish black; arils unknown; seeds 3.2–3.5 × 2.3–2.7 mm, widely obovate in outline, symmetric around





***Passiflora salvadorensis*** Donn. Sm. 1906  
 Subgenus *Decaloba* Supersection *Decaloba*

Distribution : El Salvador.

Plant glabrous throughout; stem subtriangular, striate; stipules filiform; petioles 3 to 5 cm. long, glandless; leaves 6 to 10 cm. long (along lateral nerves), 6.5 to 8.5 cm. wide (or the lower up to 18 cm. long, 12 cm. wide), bilobed one-third to two-thirds their length (lobes oblong, lance-oblong, or



ovate-oblong, rounded or acutish, suberect, the sinus often very narrow), rounded or truncate at base but often abruptly narrowed to petiole, dark green and often lustrous above, paler and dull beneath, membranous; peduncles in pairs, up to 5 cm. long, slender; bracts subulate, about 4 mm. long, borne slightly below middle of peduncle; flowers 2.5 to 3 cm. wide; sepals linear, 1.5 to 2 cm. long, 5 mm. wide or less, green; petals similar to the sepals, about 5 mm. long and 1.5 mm. wide, white or light yellow-green; corona filaments in a single series, filiform, about 1 cm. long, purple or purplish red; operculum membranous, 3 to 4 mm. high, erect or very slightly inclined toward the gynophore, pinkish purple, slightly plicate, denticulate; limen annular, 1 to 2 mm. high; ovary subglobose; fruit globose, about 1 cm. in diameter; seeds obovate, 2 to 3 mm. long, 1.5 to 2 mm. wide, transversely sulcate with about 6 strongly rugulose ridges.





# *Passiflora bucaramangensis* Killip 1930

## Subgenus *Decaloba* Supersection *Decaloba*

Distribution : South America.

Plant essentially glabrous throughout; stem slightly trigonous, striate, minutely scabrid; stipules narrowly linear-falcate or almost setaceous, 1 to 2 mm. long, reddish purple; petioles slender, 1 to 2.5 cm. long, glandless; leaves transversely oblong, 1 to 3 cm. long, 3 to 7 cm. wide, 3-lobed about a third their length (lobes subequal or the middle lobe slightly the longest, 1 to 2 cm. wide, rounded or truncate, sometimes emarginate at apex), truncate or cordate at base, 3-nerved (nerves and veins usually prominent beneath), ocellate beneath, subcoriaceous, drying green; peduncles in pairs, about 1.5 cm. long, very slender; bracts setaceous, about 1 mm. long, scattered, persistent; flowers about 2 cm. wide; sepals linearoblong, about 10 mm. long, 3 mm. wide, obtuse, grass-green, pale at margin; petals oblong, 5 to 6 mm. long, 3 mm. wide, obtuse, white; corona filaments in 2 series, the outer filaments narrowly linearclavate, 4 to 5 mm. long, deep purple below, green at the slightly enlarged tip, the inner filaments filiform, 2 to 3 mm. long, grassgreen; operculum closely plicate, denticulate, deep purple; limen annular, green; ovary globose; fruit globose, 8 to 9 mm. in diameter; seeds obcordate, 3 mm. long, 2.5 mm. wide, transversely 5-sulcate, the ridges rugulose.



# *Passiflora mollis* Kunth 1817

## Subgenus *Decaloba* Supersection *Decaloba*

Distribution : South America.

Stem angulate, flexuous, densely and softly villosulous; stipules narrowly linear, 6 to 8 mm. long, falcate; petioles up to 1 cm. long, glandless; leaves oblong or ovate-oblong, 5 to 10 cm. long, 3 to 7.5 cm. wide, 3-lobed at apex (middle lobe subtriangular, rounded or acutish, the lateral lobes usually much shorter, rounded or rarely acutish, often obsolescent so that the leaf is subentire, rarely the lateral lobes subequal to the middle lobe), or sometimes lunately bilobed, rounded at base, subcoriaceous, finely pubescent or glabrescent above, densely and softly ferruginous-villosulous-tomentose beneath; peduncles solitary or in pairs, 5 to 10 mm. long; bracts setaceous, 2 to 3 mm. long, purplish, soon deciduous; flowers 3 to 3.5 cm. wide; sepals linear-oblong, 8 to 10 mm. long, about 2 mm. wide, reddish without, greenish white or yellowish within; petals linear, 4 to 5 mm. long, 1 to 1.5 mm. wide, greenish white or yellowish;



corona filaments in 2 series, the outer fusiform or liguliform, about 4 mm. long, the inner filiform, 2 to 3 mm. long, capitellate; operculum closely plicate, denticulate; limen annular; ovary globose, densely villous; fruit globose, about 1 cm. in diameter, pilosulous; seeds obovate, about 3 mm. long and 2 mm. wide, transversely 5-6-sulcate.





# *Passiflora magdalenae* Triana & Planch 1873

## Subgenus *Decaloba* Supersection *Decaloba*

Distribution :  
Colombia.

Stem  
angulate,  
tortuous,  
glabrous, or  
the younger  
parts finely  
pubescent;  
stipules  
subulate, 3 to  
3.5 mm.  
long;  
petioles  
slender, up  
to 5 cm.  
long,  
glandless,  
glabrous or  
finely  
appressed-  
pubescent;  
leaves  
triangular-  
obovate, 4 to



John Ocampo

8 cm. long, 5 to 8 cm. wide, truncately 3-lobed (lobes 0.8 to 1.5 cm. long, rounded or truncate, mucronulate, subequal or the middle longer than the lateral), cuneate at base, ocellate beneath, glabrous, membranous, usually reddish beneath; peduncles solitary or in pairs, 2 to 3 cm. long, very slender; flowers up to 3 cm. wide, purplish white(?); sepals lanceolate, 1 to 1.5 cm. long, about 0.4 cm. wide, obtuse; petals similar to and slightly shorter than sepals; corona filaments numerous, in 2 or 3 indefinite series, filiform, about 8 mm. long; operculum plicate, lobulate at margin; limen saucer-shaped, subcrenulate; ovary subglobose, tomentellous when young, at length nearly glabrous; fruit globose, 8 to 9 mm. in diameter, black; seeds narrowly obcordate, about 3 mm. long, 2 mm. wide, acute at apex, transversely sulcate with about 6 grooves.



Juan Sebastián López Caro





# *Passiflora tribolophylla* Harms 1922

## Subgenus *Decaloba* Supersection *Decaloba*

Distribution :  
Colombia.

Stem densely and softly pilosulous; stipules setaceous, 4 to 5 mm. long; petioles 5 to 12 mm. long, glandless; leaves lanceolate, oblonglanceolate, or linear-lanceolate in general outline, 3 to 12 cm. long, 1 to 4 cm. wide, 2-3-lobed (lateral lobes suberect, 12 mm. long, acute, the middle lobe equaling the lateral lobes or much reduced), rounded or shallowly cordate at base, 3-nerved, closely reticulateveined, coriaceous, dull sea-green, lustrous and glabrous above, sublustrous and finely pilosulous beneath; peduncles 1.5 to 2.5 cm. long, articulate near apex; bracts setaceous, about 2 mm. long; sepals lanceolate, 1 to 1.5 cm. long, 5 to 7 mm. wide, obtuse, puberulent and green without, violet at base, white within; petals linear-oblong, subequal to sepals, white, violet at base; corona filaments in 2 series, the outer falcate-ligulate, 6 to 7 mm. long, greenish yellow, purplebanded, the inner capillary, about 3 mm. long; the operculum membranous, plicate, 3 mm. high; nectar ring a low ridge; limen cupuliform; ovary pilosulous.



Martin Wettges



Martin Wettges



# *Passiflora solomonii* L Escobar 1989

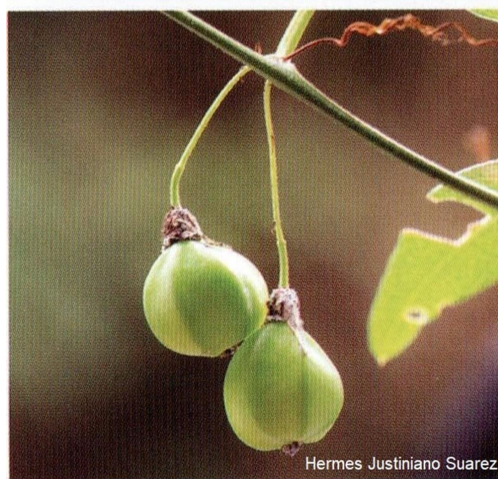
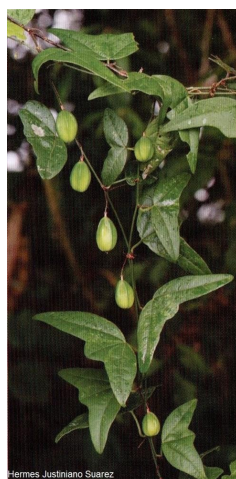
## Subgenus *Decaloba* Supersection *Multiflora*

Distribution : Bolivia.

Stem, stipules, petiole, and leaf veins on abaxial surface of lamina and abaxial side of the calyx lobes finely pubescent ; trichomes 0.1-0.3 mm long.

Petiole 7-9 mm long, eglandular ; stipules 3-4 x 0.2-0.3 mm, caducous ; lamina 95-105 mm wide, 2-lobed, truncate at base, coriaceous, adaxially dark green, abaxially light green ; lateral veins 44-53 mm long ; angle between lateral veins 170°- 185° ; median vein 7-10 mm long, 0.1-0.2 x as long as lateral veins ; lobes ovate to narrowly ovate, apex rounded or acuminate, often emarginate up to 1 mm depth. Flowers in pairs from axils of foliar leaves, pedicels 13-14 mm long, articulation 4-5 mm below flower, bracts 2-3 x 0.2-0.5 mm, scattered along the pedicel between base of pedicel and articulation ; perianth 25-30 mm in diameter ; hypanthium

shallowly concave around point of attachment of pedicel ; calyx lobes 8-12 mm long, triangular to triangular-ovate, abaxial green with red spots, adaxial greenish-white ; corona lobes 7-11 mm long, elliptical to narrowly ovate, green ; outer corona filaments 6-8 mm long, filiform to ligulate, whitish ; inner corona filaments 3 mm long, filiform, clavate at apex, whitish ; operculum plicate, incurved, whitish ; androgynophor 3-4 mm long ; ovary widely spindle-shaped to globose, hispidulous ; fruit globose.



***Passiflora tenella*** Killip 1930  
 Subgenus *Decaloba* Supersection *Decaloba* Section  
*Xerogona*

Distribution :  
 Ecuador.

Plant very slender, essentially glabrous throughout; stem subangular, striate; stipules setaceous, 1.5 mm. long; petioles very slender, 1 to 2.5 cm. long, glandless, sparingly pilosulous toward apex; leaves transversely oblong in general outline, 1.5 to 3 cm. long, 4 to 7 cm. wide, shallowly 3-lobed at the truncate apex (lobes obtuse



Jorgensen

or truncate; rarely the leaves distinctly 3-lobed about a third their length), retuse at base, 3-nerved, not ocellate beneath, bright green above (when dry), glaucous beneath, thin-membranous; peduncles solitary, 1-flowered, very slender, 2 to 3 cm. long, articulate just below apex; bracts setaceous, 2 mm. long, soon deciduous; flowers about 1.5 cm. wide, greenish white; sepals narrowly lanceolate, 8 to 9 mm. long, 1.5 to 2 mm. wide at base, acutish, 3-nerved, reticulateveined, thin-transparent; petals linear, 2 to 3 mm. long, obtuse, thin-transparent; corona filaments filiform, in 2 series, the outer filaments equaling the sepals, the inner barely 2 mm. long; operculum membranous, about 1 mm. high, very slightly plicate; ovary narrowly ellipsoidal, glabrous; fruit ellipsoidal, about 3 cm. long, 0.8 cm. in diameter, tapering to a stipitate base, acuminate at apex, 6-ribbed; seeds narrowly obovate, about 2.5 mm. long, 1.5 mm. wide, transversely 4-5-sulcate, the ridges rugulose.



Jorgensen



# *Passiflora panamensis* Killip 1922

## Subgenus *Decaloba* Supersection *Decaloba*

Distribution : Costa Rica, Panama.

Plant glabrous throughout; stem angulate, grooved, flexuous; stipules linear-falcate, 4 to 5 mm. long; petioles 1.5 to 2.5 cm. long, glandless; leaves suborbicular in general outline, 5 to 8 cm. long, 5 to 7 cm. wide, 3-lobed (lobes approximate, subequal or the middle slightly longer, about one-third the length of blade, triangular, acute or somewhat obtuse, mucronate), rounded or subpeltate at base, 3-nerved, subcoriaceous, ocellate beneath; peduncles 2.5 to 4 cm. long, articulate about 6 mm. below the flower; bracts setaceous, deciduous, 2 borne at the point of articulation, the third near the middle of the peduncle; flowers about 3 cm. wide; sepals oblonglanceolate, 1.2 to 1.4 cm. long, 6 to 7 mm. wide, obtuse, yellowish green; petals rose-colored, spatulate, 8 mm. long, 3 to 4 mm. wide; corona filaments in 2 series, the outer 7 mm. long, subfalcate, dilated and 3-angled toward apex, the inner 3 mm. long, capillary, minutely capitellate; operculum membranous, pink, plicate, erect, crenulate; limen annular; ovary globose, sparingly strigillose; fruit globose, 2 cm. in diameter, glabrate; seeds straw-colored, obovate, apiculate, strongly flattened, transversely sulcate with about 6 sharp, somewhat rugulose ridges.



Shirley Sekarajasingham



Yero Kuethe



Brooke Smith



# *Passiflora longilobis* Hoehne 1910

## Subgenus *Decaloba* Supersection *Decaloba*

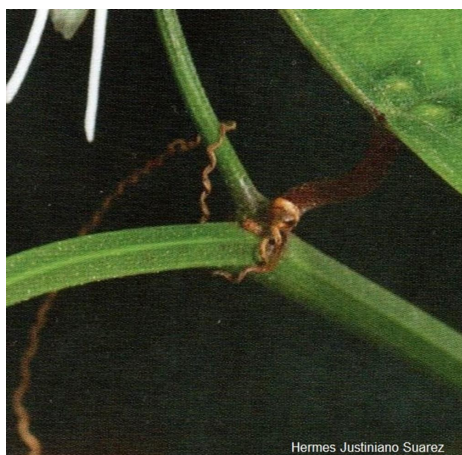
Distribution : Brazil,  
Bolivia.

Stem flattened to  
complanate, striate,  
and verrucose.  
Stipules linear-  
subulate. Leaves with  
petioles without  
glands, blades 2-  
lobed, ocelli present.  
Bracts linear-  
subulate. Flowers  
solitary, sepals and  
petals oblong with  
apex acute, corona  
biseriate, external  
filaments fili-form,  
verrucose with apex  
acute, internal  
filaments fili-form  
with apex bilobate,  
operculum  
denticulate, limen  
recurved, ovary  
fusiform and  
glabrous. Fruit a  
berry, ellipsoid,  
glabrous. Seeds  
obovoid, testa with  
transverse grooves. It  
is distinguished from  
other species of the

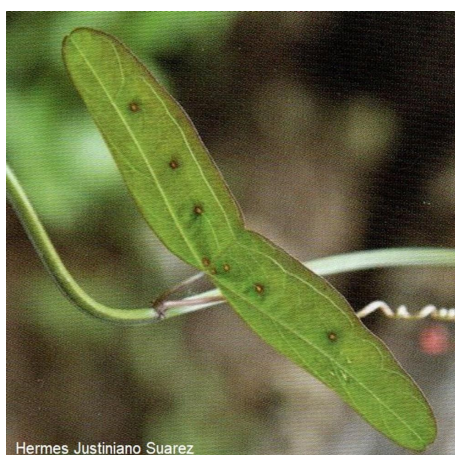
*P. misera* complex by its extremely narrow leaf blades, flowers with a fusiform and glabrous ovary, and ellipsoi-dal, glabrous fruits.



Hermes Justiniano Suarez



Hermes Justiniano Suarez



Hermes Justiniano Suarez



Hermes Justiniano Suarez



# *Passiflora praemorsa* T E Boza Espinosa 2014

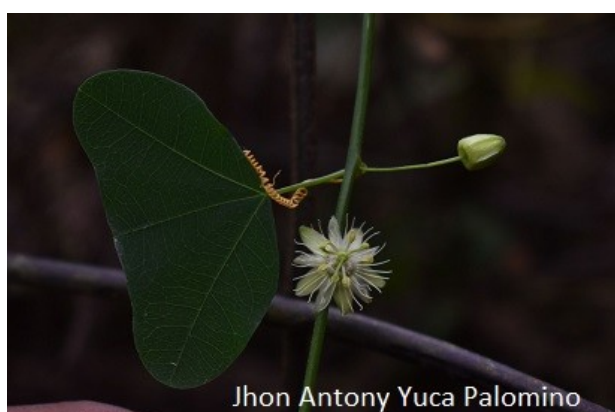
## Subgenus *Decaloba* Supersection *Decaloba*

Distribution :  
Peru, Bolivia.

Vine, sparsely  
pubescent to  
glabrescent  
throughout;  
stems striate.  
Stipules (1.7–  
1.8–2.1(–2.3) x  
0.1–0.3 mm,  
linear to linear-  
triangular,  
caducous,  
petioles (11–  
17.5–21.8(–32)  
mm with two  
petiolar  
nectaries (0.5–  
0.9–1.1(–1.2)



mm diameter, nectaries positioned on basal half of petiole; lamina (2.3–)2.7–3.3(–4.1) x (5.7–)6.9–8.1(–8.9) cm, entire, depressed obovate, cordate at the base, 2(or3)-lobed, the lateral lobes slightly rounded rarely acuminate to acute, the central lobe, if present, reduced and obtuse or rounded; the angle between the lateral lobe veins (103°–)112°–115° (125°); with 3 to 9 ocellate glands (0.3–)0.4–0.5(–0.6) mm diameter, in lines between primary veins. Peduncles 10.1–12.5 mm, slender, in pairs, bracts 0.7–1.3 x 0.1–0.2 mm, narrowly triangular, scatter along the peduncle. Flowers 17.4–18.7(–20) mm diameter, greenish white or pale yellow-green; floral stipe 2.5–5.1(–6.6) mm; sepals (4.3–)6.3–6.9(–8.4) x (1.9–)2.4–2.9(–4) mm, narrowly triangular, sparsely hirsutulous pubescent outside, pale green to white, apex acute; petals (3.7–)5.2–5.7(–6.4) x (0.8–)1.4–1.7(–2.1) mm, linear to narrowly triangular; apex praemorse (ragged), white; coronal filaments in 2 series, filaments of outer row (3.9–)4.4–4.8(–5.2) mm, filiform, purple proximally and white distally; filaments of the inner row (0.5–)0.6–0.7(–0.8) mm, filiform, purple with white apex; operculum(0.8–)0.9–1.1 mm, membranous, lacinate with some clefts 2/3 of the length, purple; androgynophore 2–2.8 mm long, green; filaments (2.1–)2.3–2.6(–2.9) mm; anthers(1.4–)1.8–2(–2.2) x (0.5–)0.7–0.9(–1.2) mm; ovary0.9–1.4(1.8) x 0.6–0.9(–1.2) mm, ellipsoid, glabrous; styles (1.1–)2.1–2.2(2.8) x 0.3–0.4 mm; stigma 0.7–0.9 mm diameter, capitate. Fruit 22 x 11 mm, ellipsoid, glabrous, green.



***Passiflora praemorsa*** T E Boza Espinosa 2014  
Subgenus *Decaloba* Supersection *Decaloba*



Distribution : Peru, Bolivia.

Vine, sparsely pubescent to glabrescent throughout; stems striate. Stipules (1.7–)1.8–2.1(–2.3) x 0.1–0.3 mm, linear to linear-triangular, caducous, petioles (11–)17.5–21.8(–32) mm with two petiolar nectaries (0.5–)0.9–1.1(–1.2) mm diameter, nectaries positioned on basal half of petiole; lamina (2.3–)2.7–3.3(–4.1) x (5.7–)6.9–8.1(–8.9) cm, entire, depressed obovate, cordate at the base, 2(or3)-lobed, the lateral lobes slightly rounded rarely acuminate to acute, the central lobe, if present, reduced and obtuse or rounded; the angle between the lateral lobe veins (103°–)112°–115° (125°); with 3 to 9 ocellate glands (0.3–)0.4–0.5(–0.6) mm diameter, in lines between primary veins. Peduncles 10.1–12.5 mm, slender, in pairs, bracts 0.7–1.3 x 0.1–0.2 mm, narrowly triangular, scatter along the peduncle. Flowers 17.4–18.7(–20) mm diameter, greenish white or pale yellow-green; floral stipe 2.5–5.1(–6.6) mm; sepals (4.3–)6.3–6.9(–8.4) x (1.9–)2.4–2.9(–4) mm, narrowly triangular, sparsely hirsutulous pubescent outside, pale green to white, apex acute; petals (3.7–)5.2–5.7(–6.4) x (0.8–)1.4–1.7(–2.1) mm, linear to narrowly triangular; apex praemorse (ragged), white; coronal filaments in 2 series, filaments of outer row (3.9–)4.4–4.8(–5.2) mm, filiform, purple proximally and white distally; filaments of the inner row (0.5–)0.6–0.7(–0.8) mm, filiform, purple with white apex; operculum(0.8–)0.9–1.1 mm, membranous, laciniate with some clefts 2/3 of the length, purple; androgynophore 2–2.8 mm long, green; filaments (2.1–)2.3–2.6(–2.9) mm; anthers(1.4–)1.8–2(–2.2) x (0.5–)0.7–0.9(–1.2) mm; ovary0.9–1.4(1.8) x 0.6–0.9(–1.2) mm, ellipsoid, glabrous; styles (1.1–)2.1–2.2(2.8) x 0.3–0.4 mm; stigma 0.7–0.9 mm diameter, capitate. Fruit 22 x 11 mm, ellipsoid, glabrous, green.



# *Passiflora carnosisepala* P Jorgensen 2004

## Subgenus *Decaloba* Supersection *Decaloba*

Distribution : Ecuador.

Vine, white hirsute or pilose pubescent throughout except for certain floral parts, pubescence denser along the pronounced nerves on the abaxial side; trichomes simple, straight or slightly curved, opaque or dull; stem rounded triangular when young, becoming more pronouncedly angled and grooved with age retaining the dense pubescence for a while; internodes 5.0-6.5 cm long; stem 4 mm thick. Stipules 9-14 x 1.5-2.0 mm, linear, slightly curved, brown when *dry*; axillary buds supported by one prophyll; petiole 0.8-1.6 cm long, canaliculate, often twisted and curved, glandless; lamina 6.0-10.0 x 5.1- 8.2 cm, elliptic to broadly elliptic, membranaceous, both surfaces dull, pubescence above distributed almost evenly, slightly higher concentration of trichomes along margin, pubescence below denser along the prominently raised nerves, trinerved, branching occurs a few mm from the leaf base, each primary nerve ending in a distinct mucro, unlobed or the central lobe only slightly longer than lateral lobes; apex truncate; mucros 1.5-2 mm; base broadly obtuse to truncate; margin entire with a slight tendency to being repand; ocellae 4-7 (-10) between each of the primary nerves, plus 1 between the lateral primary and the first secondary nerve, conoid at



base of leaf, flat towards apex; venation camptodromous and reticulate, the veins flat above and strongly raised below to the tertiary level, lateral nerves divaricate at an angle of 70° although turning parallel soon so that the angle between the lateral nerves measured at mucro is only about 20°. Flowers 6.3 cm in diam.; peduncles 3-3.3 cm long, in pairs, one flowered; bracts 1.3-1.7 x 1.1-1.3 cm, broadly ovate, verticillate, light green, drying brown, apex acuminate, base truncate slightly cuneate, pedicellate; pedicel 1-2 mm; floral stipe 3-4 mm; hypanthium 1.7-1.9 cm in diam., patelliform, pentagonal; sepals 24-27 x 14-17 mm, imbricate, ovate, not awned, fleshy, white with purple dots or lines towards the apex inside, abaxial exposed surface light green and hirsute, covered surfaced (by neighboring sepal) glabrous and white; petals 14.0 x 9.5 mm, broadly ovate, glabrous, white with purple dots or lines to-wards the apex, almost hyaline; outer coronal series 10-11 mm, 35-40 members, spatuliform, falcate and cross section almost square in upper 1/2, lower part cream, then a purple maroon dotted band, upper 1/3- 1/2 yellow and square in cross section; inner corona series 7 mm, filiform with a capitate papillate irregular apex, translucent cream; operculum 3.5-4 mm high, plicate, incurved, with ciliate margin, occasional purple maroon dots; limen present, 3 mm high, a fimbriate margin on inner surface, nectariferous tissue along outer rim and between limen and operculum; androgynophore 12 mm, lightly maroon purple; staminal filaments free from base of ovary, filaments 7-8 mm, linear, maroon purple; thecae 6 x 3.5 mm empty of pollen, maroon purple; pollen yellow; ovary 11 x 7 mm, slightly obovoid, lanate; styles 6 mm, linear, maroon purple; stigma 2.5-3 mm in diam., capitate, green. Fruit (described from photo by S. Matezki) 3.7 x 3.5 cm, subspherical, green, pubescent, and probably immature; arillus translucent; seeds 2.8 x 2 mm almost symmetric, black. -

***Passiflora quadriflora*** Killip 1927  
Subgenus *Decaloba* Supersection *Decaloba*



Distribution : Peru.

Plant glabrous throughout; stem angular, strongly compressed, striate, scabrous; stipules setaceous, about 1 cm. long; petioles 7 to 9 mm. long, tortuous, glandless; leaves narrowly lanceolate, 5 to 8 cm. long, 1.5 to 2 cm. wide, unlobed, acute, mucronulate, rounded or subcuneate at base, entire, 3-nerved (nerves nearly parallel, conspicuous), reticulate-veined, ocellate between lateral nerves and midnerve, coriaceous or subcoriaceous; peduncles in pairs, 2-flowered, the main portion and the branches nearly equal, each about 1 cm. long; bracts setaceous, 3 to 5 mm. long, scattered; flowers rotatecampanulate, about 5 cm. wide, greenish (?); sepals lanceolate, about 2 cm. long, 0.5 cm. wide at base, acute; petals linear-lanceolate, 5 to 6 mm. long, 1 to 1.2 mm. wide, obtuse, white, membranous; corona filaments in 2 series, the outer filiform, 5 to 6 mm. long, the inner capillary, 2 mm. long; operculum membranous, 2 mm. long, slightly plicate, finely fimbriate one-third its length; nectar ring annular; limen shallowly saucer-shaped, 0.5 mm. high; ovary globose; styles very slender, about 8 mm. long; fruit globose-ovoid, subtrigonal, averaging 2.3 cm. long, 2.2 cm. in diameter.



*Passiflora popayanensis* Killip 1930  
Subgenus *Decaloba* Supersection *Decaloba*



Distribution : Colombia.

Stem angular, compressed, tortuous, glabrous; stipules linearsetaceous, about 2 mm. long; petioles up to 1.5 cm. long, minutely pilosulous, glandless; leaves oblong or ovate-oblong, 5 to 7 cm. long, 3 to 3.5 cm. wide, bilobed a third to a half their length (lobes lanceolate, 2 to 2.5 cm. long, acuminate, mucronulate, the sinus truncate, often with a small, triangular, intermediate lobe present), rounded at base, 3-nerved, membranous, glabrous, dark green, usually paler along nerves above, glaucous beneath; peduncles slender, up to 3 cm. long, articulate just below apex; bracts setaceous, 2 to 4 mm. long, borne above middle of peduncle; flowers 3 to 3.5 cm. wide; sepals oblong-lanceolate, 1.2 to 1.5 cm. long, about 0.4 cm. wide, obtuse; petals spatulate, 6 to 7 mm. long, about 3 mm. wide, obtuse, reticulate-veined toward apex, white, the veins darker; corona filaments in 2 series, filiform, the outer 6 to 7 mm. long, the inner 4 to 5 mm. long; operculum slightly plicate, the margin minutely fimbriate; nectar ring annular; limen cushion-like, closely surrounding the base of the gynophore; gynophore very slender; ovary ovoid, glabrous.



# *Passiflora joergenseniana* T E Boza Espinoza 2014

## Subgenus *Decaloba* Supersection *Decaloba*

Distribution : Bolivia

Vine, glabrescent throughout, stems striate; axillary buds covered by two prophylls. Stipules (1.3–)1.7–2.2(2.3) x 0.1–0.2 mm, linear triangular, caducous; petioles (9–)9.8–12.1(14.5) mm with 2 to 4 petiolar nectaries (0.9–)1.2–1.5(1.8) mm diam., nectaries sessile at the base of the lamina or at the apex of the petiole; lamina 2.5–2.9 x (7.7–)9.1–10(–12) cm, entire, coriaceous, very shallowly obtriangular, cordate at the base, adaxially dark green, abaxially light green, 2-lobed, lobes acuminate to acute; the angle between lateral lobe veins (119°–)127°–140°(148°); with 4 to 18 ocellate glands (0.5–)0.7–0.9(–1.1) mm diam., distributed randomly between primary veins. Peduncles 9.6–13.7 mm, in pairs, bracts 1.2–1.330.2–0.3 mm, linear, scattered along the peduncle; floral stipe 1.9–2.3 mm. Flowers ca. 25 mm diameter, greenish white or pale yellow-green; sepals 11–11.2 x 5.1–5.3 mm, widely ovate, pale yellow-green, apex rounded; petals 8–9 x 5.0–5.7 mm, widely ovate; pale yellow-green, rounded apex; coronal filaments in 2

series filaments of outer row 2.8–3 mm long, 1/3 as long as the petals, denticulate in the distal 1/3, purple in proximal part, pale yellow distally; filaments of the inner row 1.5–1.6 mm long, filiform, apex clavate, purple in proximal part, pale yellow distally; operculum 1.5–1.6 mm, membranous, plicate; androgynophore ca. 3.9 mm long, green; filaments 2.5–2.6 mm; anthers 1.8–2.2 x 1.2–1.3 mm; ovary ca. 1.9 x 1.2 mm, ellipsoid to fusiform-ellipsoid, glabrous; styles 2.5–3 x 0.1–0.2 mm; stigma 1–1.3 mm diameter, capitate. Fruit and seed unknown.





# *Passiflora deidamioides* Harms 1923

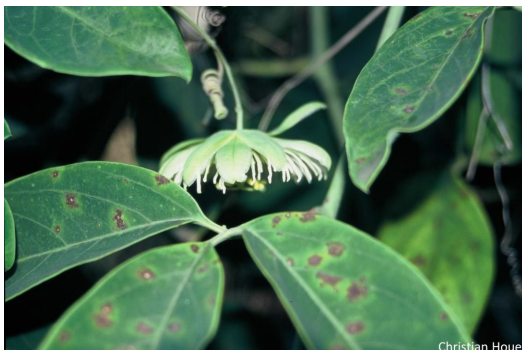
## Subgenus *Deidamioides* Section *Deidamioides*



Distribution: Brazil Sao Paulo, Rio of Janeiro.

Plant glabrous throughout; stem subterete; stipules?; petioles 1.5 to 5 cm. long, bearing 2 to 4 sessile glands; leaves trifoliolate, the leaflets oblong or obovate-oblong, 5 to 8 cm. long, 2 to 5 cm. wide, obtuse at apex, obtuse at base or narrowed to a short (5 to 10 mm.) petiolule, entire, 1-nerved, membranous or subcoriaceous; peduncles solitary, 4 to 6 cm. long, slender, bearing 2 slenderpediceled flowers (pedicels 2 to 3 cm. long), and terminating in a long tendril; bracts setaceous, 2 to 3 mm. long; flowers 5 to 6 cm. wide; calyx tube broadly

campanulate, 4 to 5 mm. long, 12 to 13 mm. wide at throat; sepals lanceolate-oblong, obtuse; petals nearly as long as and narrower than sepals; corona in several series, the outer 1.5 to 2 cm. long, the succeeding gradually shorter, the innermost filiform, 3 to 5 mm. long; operculum membranous, 2 to 3 mm. high, plicate, lobulate; limen cupuliform, adnate to base of gynophore; ovary ovoid, glabrous.





# *Passiflora cirrhiflora* Jussieu 1805

## Subgenus *Deidamioides* Section *Polyantha*

Distribution:  
French  
Guyana.

Stem terete,  
glabrous or  
puberulent;  
stipules  
setaceous;  
petioles up  
to 10 cm.  
long,  
biglandular  
about 1 cm.  
above base,  
the glands  
sessile,  
often  
scarcely  
more than a  
scar; leaves  
pedately 5-7  
-  
foliolate, the  
leaflets  
oblong, 5 to  
8 cm. long,  
3 to 4 cm.  
wide, acute  
or

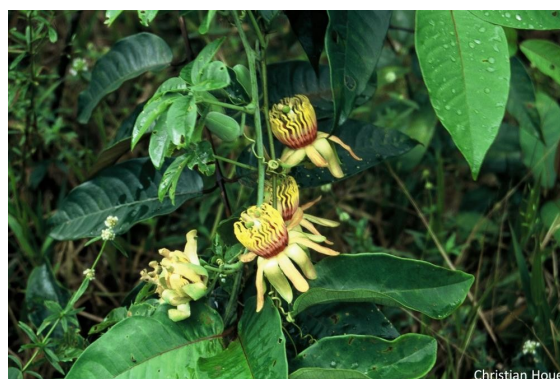
acuminate, and long-aristate at apex, narrowed at base to the petiole, aristate-bidentate near base, membranous, glabrous throughout or finely puberulent beneath; peduncles solitary, stout, 1 to 4 cm. long, 2-flowered at apex, terminating in a stout tendril, the pedicels 2 to 5 cm. long; bractlets borne at base of flower, linear-subulate, about 1 cm. long, biglandular at base; flowers reddish purple, 6 to 8 cm. wide; calyx tube broadly campanulate, 5 to 10 mm. long; sepals oblong, about 3 cm. long, 7 to 8 mm. wide, obtuse, fleshy, puberulent without; petals linear-oblong, about 2.5 cm. long, 6 to 7 mm. wide, thin, many veined; corona filaments in 3 series, the outermost liguliform, about 3 cm. long, crispate in upper half, verrucose or fimbriate along the margin, white at base, yellow at middle, tipped with dark red, those of the 2 inner series narrowly linear, 1 cm. long, capitate; operculum membranous, closely plicate, fimbriate; limen tubular, 6 to 8 mm. high, closely surrounding base of gynophore, 5-lobed; ovary ovoid, trigonous, truncate, densely tomentellous; styles thick, 2 mm. long, projecting at the top of the angles of the ovary; stigmas orbicular, 5 mm. in diameter; fruit globose, the pericarp coriaceous.



Christian Houel



Olivier Gaubert



Christian Houel



***Passiflora cirrhiflora*** Jussieu 1805  
Subgenus *Deidamioides* Section *Polyantha*





# *Passiflora contracta* Vitta 1989

## Subgenus *Deidamioides* Section *Tétrastyllis*

Distribution: Brazil Esperito Santo.

*Lianas* with young stems glabrous or sparsely puberulent. *Stipules* filiform, 0.7–1 mm long, deciduous. *Petioles* 6–14 mm long, glabrescent or sparsely puberulous, canaliculate; nectaries paired (rarely one), elliptical, sessile, 1–1.3 mm long, at or more frequently below the midpoint. *Leaf blades* 6–11 3 2.5–5.4 cm, elliptic to oblong or obovate, glabrous, coriaceous, the margin cartilaginous, the apex acuminate, the base acute to rounded. *Inflorescences* racemiform, the main axis 7–12 cm long, sparsely to densely puberulent, bearing solitary or rarely paired and puberulent pedicels 1.2–2.7 cm long,

articulated at the very base, subtended by a falciform bract 1.1–1.7 mm long; pedicel below articulation point 1.3–2.5 mm long, with 2–3 scattered sessile triangular bracteoles, these 1.1–1.3 3 0.5–0.9 mm; pedicel above articulation 1.1–2.5 cm long. *Flowers* 5–6 cm diam. with retrorse sepals and petals; sepals 2.3–3.1 3 0.7–0.8 cm, the apex rounded, not aristate, the abaxial surface minutely puberulent; petals 2.3–3 3 0.5–0.7 cm; floral tube 0.3 3 1–1.2 cm, discoid, the outer surface minutely puberulent; filamentous corona 3-ranked, the outer series of filaments 6.5–7.7 mm long, the 2 inner series 2.5–5 mm long; operculum 3 mm, horizontally spreading, closely plicate, the margin denticulate; limen 3–3.5 mm high, fleshy, cupuliform; gynophore 1.7–2.4 cm long, slightly recurved; filaments united beyond the gynophore and grouped on one side of the gynophore toward the center of the flower, the free part of filaments 0.8–1 cm; anthers 1–1.3 cm; styles 8–9 mm; ovary 4.5–6.7 mm, ellipsoid, entirely minutely puberulent or only so at the apex. *Fruit* 6 3 4 cm, ellipsoid, yellow; seeds 8 3 6 mm, obovate, reticulate; aril white.



Christian Houel



Christian Houel



Christian Houel



# *Passiflora ovalis* Vell. 1827

## Subgenus *Deidamioides* Section *Tétrastylis*

Distribution Brazil Rio of Janeiro, Sao Paulo  
Woody vine, glabrous throughout; stem terete, longitudinally sulcate, suberose below; stipules setaceous, 8 to 10 mm. long, soon deciduous; petioles 2.5 to 4 cm. long, biglandular at base, the glands orbicular, about 1.5 mm. in diameter, sessile; leaves elliptic or elliptic-oblong, 6 to 10 cm. long, 3 to 5.5 cm. wide, not lobed, abruptly acuminate at apex, acutish at base, entire, usually cartilaginous at margin, 1-nerved (principal lateral nerves 7 or 8 pairs, arcuate), conspicuously

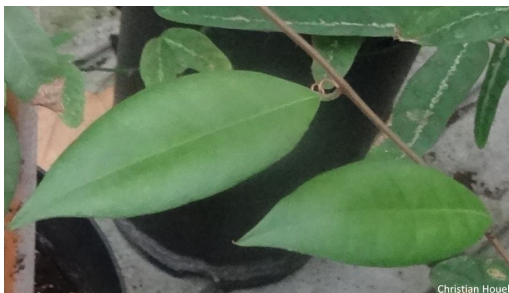
reticulate-veined, coriaceous, sublustrous; flowers in axillary racemes up to 75 cm. long, the peduncle short, about 1 cm. long, stout, 2-flowered, the pedicels 1.5 to 4 cm. long, articulate above middle; bracts and bractlets setaceous, 1 to 2 mm. long/ soon deciduous; calyx tube 3 to 5 mm. long; sepals oblong, 2.5 to 3 cm. long, 5 to 7 mm. wide, obtuse, ecoriaceous, subcoriaceous, dull red without (when dry), paler within, longitudinally streaked with red; petals oblong or lance-oblong, 1.5 to 2 cm. long, 3 to 5 mm. wide, obtuse, membranous, whitish, longitudinally streaked with red both without and within; corona filaments narrowly liguliform, in 2 series, the outer about 1 cm. long, the inner half as long; operculum membranous, closely plicate, incurved, crispate; limen annular, fleshy; gynophore about 2 cm. long; ovary oblong; fruit ovoid, 6 to 10 cm. long, 3.5 to 8 cm. wide; seeds obovate, 5 to 7 mm. long, 4 to 5 mm. wide, reticulate.



I Sazima



© 1994 Ivan & Marlies Sazima



Christian Howell



Christian Howell



© 1994 Ivan & Marlies Sazima

***Passiflora igrapiunensis*** T. S. Nunes & L. P. Queiroz  
2014

Subgenus *Deidamioides* Section *Tétrastylis*

Distribution:: Brazil (Bahia).

Woody vines, glabrous throughout; stem terete, with suberous bark. Stipules, tendrils, and leaves not seen. Inflorescence frequently branching to the second or third order, main axis ca. 25–30 cm long., pendulous, proximal peduncle 5–8 x 1.5–2 mm, not ending in a tendril, distal peduncle 17–20 mm long., biglandular, glands sessile; pedicels 13–17 x 1–2 mm; bracts three, linear, 2 x 1 mm, glands absent; bractlets two, similar to the bracts. Flowers 8–10 cm diam; calyx tube 4–5 mm long, 13–14 mm diam, short-campanulate, 5-lobed, velutinous, 5 sepals ca. 40–45 x 10–14 mm, oblong, apex acute, margins entire, adaxial surface green, abaxial surface cream, glabrous, densely velutinous, awns and glands absent; 5 petals ca. 3.5 x 1.2 cm, membranous, oblong, apex acute, margins entire, adaxial and abaxial surfaces cream, glabrous; coronal filaments white, not variegated or banded, filiform, in two series, outer filaments ca. 12 mm long, inner filaments ca. 6 mm long; operculum membranaceous, ca. 4 mm long, upper margin lacinate; limen membranaceous, ca. 4 mm long, cupuliform; nectariferous ring present; androgynophore 9–20 mm long, trochlea absent; staminal filaments 15–30 mm long, glabrous, anthers ca. 15 mm long.; ovary ca. 6.5 mm long, elliptic, velutinous, trichomes white, styles four, ca. 20 mm long, stigmas capitate. Fruit not seen.



# *Passiflora timboensis* T. S. Nunes & L. P. Queiroz 2014

## Subgenus *Deidamioides* Section *Tétrastylis*

Distribution: Brazil (Bahia).:

Woody vines; stem terete, bark suberous; tendrils nonfurcate, with adhesive discs. Stipules 3–4 x 1–1.5 mm, lanceolate, persistent, apex acute, margins entire, glands absent. Petiole 30–40 x 3–4 cm, glabrous, biglandular, glands orbiculate, sessile, located at ca. 6–10 mm from the base, lamina 14–18 x 7–10 cm, entire, ovate, coriaceous, apex acuminate, base rounded, margins entire, revolute, adaxial and abaxial surfaces glabrous, major venation pinnate, secondary veins 6–8 pairs, prominent, glands absent. Inflorescences frequently branching to second or third order, main axis 20–80 cm long, pendulous, proximal peduncle 5–20 (–32) x 3–5 mm, not ending in tendrils; distal peduncle 13–25 mm long, biglandular, glands sessile; pedicels 10–35 x 2–4 mm; bracts three, linear, 2–5 x 1 mm, glands absent; bractlets two, similar to the bracts. Flowers 10–13 cm diam; calyx tube 4–6 mm long, 16 mm diam, short-campanulate, lobes absent, pubescent, 5 sepals 6.5–7 X 2.8–3.2 cm, oblong, apex rounded, margins entire, adaxial surface white, pubescent, abaxial surface greenish, glabrous, awns and glands absent; 5 petals 4.5–6 x 2.5–3 cm, membranaceous, oblong, apex acute, margins entire, abaxial and adaxial surfaces whitish, glabrous; coronal filaments yellow, not variegated or banded, filiform, in three series, outer filaments ca. 15 mm long, inner filaments ca. 5 mm long; operculum membranaceous, 1–3 mm long, upper margin fimbriate; limen carnosus, 2–4 mm long, cupuliform; nectariferous ring present; androgynophore 5–7 mm long, trochlea absent; staminal filaments 20–30 mm long, glabrous, anthers 10–15 mm long; ovary 6–10 mm long, elliptic, densely velutinous, trichomes white, styles four, 20–30 mm long, stigmas capitate. Fruit an elliptic to obovate berry, 15–40 x 10–35 cm, velutinous, green when immature, yellow-greenish when mature. Seeds 5–7 x 3–4 mm, ovatelanceolate, apex acute to apiculate, foveolate.

# *Passiflora tetrandra* Banks & Sol. Ex Dc 1828

## Subgenus *Tetrapathea*

Distribution : New Zealand.

Medium-sized canopy liana to 15 m, base of plant woody, vining at top, glabrous throughout; young stems slender, terete, mature stems up to 10.0–15.0 cm in diameter; prophylls  $1.0 \times 1.0$  mm, triangular. Stipules triangular,  $0.25\text{--}1.0 \times 0.25\text{--}0.5$  mm, the margins entire; petioles  $(0.5\text{--})1.0\text{--}1.5$  ( $\text{--}2.0$ ) cm long, lacking nectaries; laminas coriaceous,  $(4.5\text{--})6.0\text{--}10.0$  ( $\text{--}11.5$ )  $\times (1.0\text{--})2.0\text{--}4.5$  cm, lanceolate, apices acute to acuminate, margins entire; laminar nectaries  $1.0\text{--}2.0$  mm in diam,  $(0\text{--})1\text{--}2$ , paired at the base of the lamina on either side of the mid-vein; juvenile leaves not conduplicate during development, linear to lanceolate, margins entire.

Tendrils curved in young shoots, well developed in mature shoots, green; inflorescences branched through the second order (rarely third order),  $(1\text{--})2\text{--}3$  ( $\text{--}6$ ) flowered; peduncle present (rarely absent),  $(0\text{--})3.0\text{--}8.0$  ( $\text{--}15.0$ ) mm long, pedicels  $8.0\text{--}20.0$  mm long, with an articulation  $(1.0\text{--})2.0\text{--}5.0$  ( $\text{--}7.0$ ) mm from the base; inflorescence bracts  $1.0\text{--}2.0 \times 0.25\text{--}0.5$  mm, linear. Flower buds ovoid, the largest buds  $3.0\text{--}5.0 \times 2.0\text{--}5.0$  mm; flowers erect at anthesis, sweetly scented; hypanthium  $2.0\text{--}4.0$  mm in diam.; sepals  $(3\text{--})4$ ;  $3.0\text{--}7.0 \times 1.5\text{--}3.0$  ( $\text{--}5.0$ ) mm, ovate, obtuse at apex, glabrous, white adaxially, greenish abaxially; petals  $(3\text{--})4$ ;  $4.0\text{--}6.0 \times 1.0\text{--}2.0$  mm, narrowly oblong-lanceolate, acute at apex, greenish-white; coronal filaments in two closely aligned series, outerseries  $3.0\text{--}5.0$  mm long, filiform, yellow to white, apices clavate, inner series  $1.0\text{--}3.0$  mm long, filiform, yellow to white; operculum absent in both and flowers; limen absent in,  $1.0\text{--}3.0$  mm wide in; nectar ring absent in,  $0.5\text{--}1.0$  mm wide in; stamens 4, staminal filaments yellow to white, in flowers free or fused  $1.0$  mm basally, in flowers fused  $2.0\text{--}3.0$  mm along androgynophore, the free portions  $2.0\text{--}5.0$  mm long; anthers  $1.0\text{--}2.0 \times 0.5\text{--}1.0$  mm in flowers, often greatly reduced in flowers, if well-formed, anthers barren, green; ovary in flowers  $2.0\text{--}4.0 \times 1.0\text{--}3.0$  mm, ovoid, stipitate for  $1.0\text{--}2.0$  mm on the androgynophore, in flowers ovary is reduced,  $1.0\text{--}2.0 \times 0.5$  mm, sessile, glabrous, light green; styles 2 in flowers, greatly reduced,  $0.5\text{--}1.0$  mm long, styles 4 in flowers,  $2.0\text{--}3.0$  mm long excluding stigmas; stigmas undeveloped in, in flowers, stigmas round, receptive surface flattened,  $0.5\text{--}1.0$  mm in diam. Fruit  $2.0\text{--}3.0 \times 1.0\text{--}2.0$  cm, ovoid, bright orange at maturity,

arils deep red, oily; seeds 10–20 per fruit,  $6.0\text{--}8.0 \times 4.0\text{--}6.0$  mm,  $1.0$  mm thick, obovate, black, foveate, with 8–15 foveae per side





# *Passiflora kuranda* Krosnick & Ford 2009

## Subgenus *Tetrapathea*



Tony Rodd

Distribution : Australia.

Medium-sized canopy liana to 15 m, base of plant woody, vining at top, glabrous throughout; stems terete, 5–10 cm wide at maturity, prophylls triangular, 1.0–2.0 × 0.5–1.0 mm. Stipules triangular, 1.0–3.0 × 1.0–2.0 mm, the margins entire; petioles (0.5–) 1.0–3.0 cm long, with (0–)2 nectaries in the lower half, the nectaries sessile, ovoid, 1.9–2.0 × 1.0 mm, 1.0 mm tall; laminae 10.0–22.0 × (1.0–)4.0–9.0 cm, coriaceous, elliptic to obovate, apices acute to oblique, bases oblique to cuneate, margins entire; laminar nectaries (0–)1–5(–8), 1.0–3.0(–4.0) × 1.0 mm, ovoid, sunken into the junction between the midvein and primary veins, often paired on either side of the midvein; juvenile leaves oblanceolate, the apices acute, bases cuneate, margins entire, usually with two nectaries at the base of the leaf on either side of the petiole, petioles lacking nectaries. Tendrils strongly recurved in young shoots, well developed in mature shoots, green; inflorescences frequently branching through the second or third order, 2–4(–6) flowered, primary axis of the inflorescence terminating in a tendril; peduncle (2.0–)5.0–15.0 cm, pedicels 1.0–4.0 cm long, with an articulation 0.75–3.0 cm from the base; inflorescence bracts 1.0–2.0 × 1.0 mm, short triangular. Flower buds ovoid, the largest buds 0.5–1.0 × 0.5–1.0 cm; flowers born upwards; hypanthium 1.0 cm in diam.; sepals (4–)5, 8.0–12.0 × 4.0–8.0 mm, ovate, acute at apex, glabrous, greenish-white abaxially, white adaxially; petals (4–)5, (3.0–)8.0–12.0 × 3.0–5.0 mm, narrowly oblong-lanceolate, acute at apex, white; corolla filaments in two series, outer series 8.0–12.0 mm long, filiform, white, inner series 4.0–5.0 mm long, white; operculum 2.0–4.0 mm tall, base adnate to the hypanthium, erect throughout, membranous with vertical striations, the upper margin fimbriate, white throughout; limen 6.0–8.0 mm; nectar ring 1.0 mm wide; stamens 6–8, staminal filaments connate 2.0–4.0(–7.0) mm along androgynophore, the free portions 4.0–5.0(–8.0) mm long, green; anthers 3.0–4.0 × 1.0–2.0 mm, green; ovary in flowers 2.0–4.0 × 2.0–5.0 mm, globose, with 6–8 vertical ridges, ovary in flowers sessile on the androgynophore, in flowers 1.0–2.0 mm stipitate, glabrous, light green; styles (4–)6–7, in flowers 3.0–4.0 mm long excluding stigmas, in flowers 1.0–2.0 mm long excluding stigmas; stigmas deeply bilobed, receptive surface flattened, 1.0–2.0 mm in diam. Fruit large, globose, 6.0–10.0 cm in diam., greenish yellow at maturity; arils creamy white; seeds 7.0–9.0 × 7.0–8.0 mm, 1.0 mm thick, round to obovate, dark brown at maturity, the central portions wrinkled, margin appendaged with radial striations



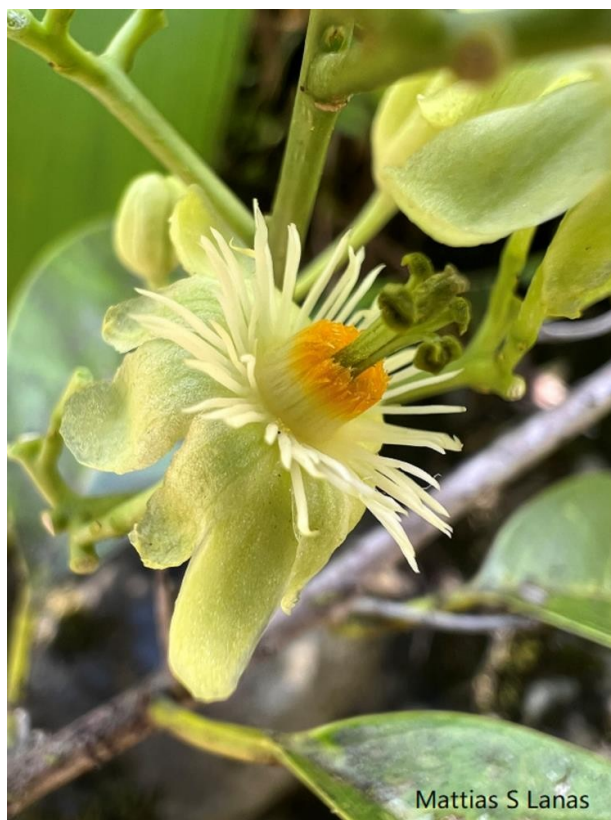
Tony Rodd

# *Passiflora aurantioides* (K. Schum.) Krosnick 2009

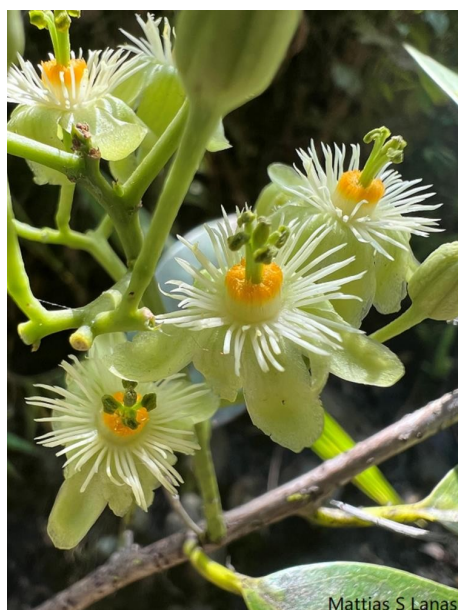
## Subgenus *Tetrapathea*

Distribution: Papua, New Guinea, Australia, Indonesia and Solomon Islands..

Medium-sized to tall canopy liana to 30 m, base of plant woody, vining at top, glabrous throughout; stems terete, prophylls triangular, 1.0–2.0 × 1.0 mm. Stipules triangular, 1.0–2.0 × 0.5 mm, the margins entire; petioles 1.0–4.0 cm long, with 2(–4) nectaries in the lower third, the nectaries 0.5–2.0(–4.0) × 0.5–2.0 mm, crateriform; laminas (8.0–)12.0–18.0(–23.0) × (3.5–)5.0–10.0(–12.0) cm, ovate, apices acute to oblique, bases oblique, margins entire; laminar nectaries (0–)1–4(–6), 1.0–3.0(–5.0) × 1.0–3.0 mm, ovoid to triangular, yellow, scattered on the abaxial surface along primary veins; juvenile leaves conduplicate in development, oblanceolate, the apices acute, bases cuneate, margins entire, petioles lacking nectaries. Tendrils curved in young shoots, well developed in mature shoots, green; inflorescences frequently branching through the (2–)3–4(–5) order, (1–)2–8(–16) flowered, primary axis terminating in a flower; peduncle 1.0–3.0(–6.0) cm (rarely absent), pedicels (0.3–)0.5–3.0(–6.0) cm long, with an articulation 0.5–1.5 cm from the base; inflorescence bracts 1.0–2.0(–4.0) × 1.0–0.4–0.8 cm; flowers born upwards; hypanthium 5.0–8.0 mm in diam.; sepals (4–)5, (4.0–)7.0–12.0 × 3.0–5.0 mm, ovate, acute at apex, glabrous, greenish-white abaxially, white adaxially; petals (4–)5, (3.0–)7.0–12.0 × 2.0–4.0 mm, narrowly oblong-lanceolate, acute at apex, white; coronal filaments in two series, outer series (3.0–)5.0–7.0 mm long, filiform, greenish white, inner series 2.0–3.0 mm long, greenish white; operculum 2.0–4.0 mm tall, base adnate to the hypanthium, erect throughout, membranous with vertical striations, white with an orange band 1.0 mm wide at the apex, the upper margin fimbriate; limen absent in both ♀ and ♂ flowers; nectar ring 1.0 mm wide; stamens (3–)4–5, in ♂ flowers staminal filaments connate 1.5–2.0 cm along androgynophore, in ♀ flowers staminal filaments connate 4.0–7.0 mm around the androgynophore, the free portions 2.0–5.0 mm long, green; anthers 2.0–3.0 × 1.0–1.5 mm, green; ovary in ♀ and ♂ flowers 2.0–2.5 × 1.0



Mattias S Lanas



Mattias S Lanas

– 2.0 mm, globose, sessile, glabrous, light green; styles 3 (–4), in ♀ flowers 1.0–2.0 mm long excluding stigmas, in ♂ flowers 0.25–1.0 mm long excluding stigmas; stigmas deeply bilobed, receptive surface flattened, 0.5–1.0 mm in diam. Fruit globose, 2.0–5.0 cm in diam., orange-red at maturity; arils creamy white, fimbriate on distal margin; seeds 5.0–10.0 × 3.0–10.0 mm × 2.0–3.0 mm, obovate, black, foveate, with 15–20 foveae per side. Chromosome number unknown.



Mattias S Lanas



***Passiflora discophora*** P. M. Jorgensen & Lawesson  
1987

Subgenus *Tryphostemmatoides*



Holger Beck

Distribution : Ecuador.

Vine glabrous ; stem terete, striate ; stipules setaceous, 0.1 cm long, soon deciduous ; petioles 0.6-1.5 cm



leg9

without glands ; leaves unlobed, oblong to ovate, (1-) 2-6 x 0.9-3 cm, with 2 sessile glands near base beneath, entire ; peduncles 0.7-1.5 cm long, solitary or in pairs ; bracts minute, soon deciduous : flowers, white and yellow, 3.5-4 cm diameter ; sepals whitish green outside, white inside, oblong-ovate, 2.4 x 0.9 cm ; petals white, oblong, 1.7 x 0.5 ; corona 3 series, outer series up to 1.8 cm long, yellow to yellow-orange at base, white in upper ½ , inner series 0.1-0.6 cm long ; ovary ovoid, glabrous ; fruit subglobose to ovoid, 3.8 x 3.2 cm, bright red to bright orange ; seeds ovate, ca. 0.4 x 0.3 cm, slightly transverse-sulcate, black.



John L. Clark (Marie Selby Botanical Gardens)



# *Passiflora gracillima* Killip 1924

## Subgenus *Tryphostemmatoides*

Distribution:  
Colombia  
2400 meters,  
Panama,  
Ecuador.  
Plant  
glabrous  
throughout;  
stem slender,  
subterete  
below,  
angulate  
above;  
stipules  
setaceous,  
2.5 to 3 mm.  
long;  
petioles up  
to 3 mm.  
long, bearing  
at apex 2  
minute,  
sessile  
glands;  
leaves  
oblong,



ovateoblong, or suborbicular, 2.5 to 5 cm. long, 2 to 4 cm. wide, unlobed, rounded or occasionally subemarginate at apex, truncate or cordulate at base, entire, penninerved (5 to 7 pairs of secondary nerves), reticulate-veined, subcoriaceous, dark green and lustrous above, green or subglaucous beneath; peduncles solitary in the axils of the leaves, 2 to 4 cm. long, very slender, bearing at apex 2 pediceled flowers, and terminating in a slender tendril; flowers 1.5 to 2 cm. wide, greenish yellow; sepals linear-lanceolate, 1 to 1.5 cm. long, 3 to 5 mm. wide, obtuse; petals 7 to 8 mm. long, 2 mm. wide; corona filaments in 2 series, the outer filiform, 4 to 5 mm. long, the inner capillary, 1.5 mm. long; operculum membranous, nonplicate, lacerate nearly to middle; limen cupuliform, 1 mm. high; ovary ovoid or ovoid-fusiform, obscurely 6-angled, 6-ribbed; fruit ellipsoid, 3 to 5 cm. long, 1.5 to 2 cm. thick, 6-angled and 6-ribbed, stipitate; seeds ovate, 3 mm. long, 1.5 mm. wide, reticulate at center, the margin thickened, faintly transverse-striate.



NA



# *Passiflora macdougaliana* S. Knapp & Mallet 1984

## Subgenus *Tryphostemmatoides*

Distribution : Panama.

Huge woody canopy liana, young stems round and glabrous; new growth erect and glaucous; stipules linear, 1.5-2 mm long, falcate, very early deciduous. Leaves coriaceous with petioles ca. 25 mm long, biglandular just beyond the middle; the glands raised hemispheres ca. 2 mm wide; blades ovate, ca. 135 mm long, 80 mm wide, 5-veined from the base; apex acute with a tiny notch, base cuneate; upper leaf



surface shining, lower surface glaucous with prominent green venation, laminar nectaries absent. Flowers solitary at each node, erect, sweetly fragrant; pedicel ca. 45 mm long, joint ca. 25 mm from the base; tendrils present on new growth, but early deciduous; floral bracts 3, scattered from the joint to 10 mm below the joint, deltoid, ca. 1 mm long, 1 mm wide at the base, pale brown; buds green, shining, coriaceous, aestivation quincuncial, with 5 lenticular glands evenly spaced about the bud ca. 5 mm from top of the calyx tube; calyx tube ca. 13 mm wide, 5 mm deep; sepals thick and fleshy, ca. 30 mm long, 10-15 mm wide, narrowly triangular, apex obtuse, white adaxially, green and shining abaxially; with 5 raised circular glands 1 mm diam. on sepal margins outermost in bud, 5 mm from sepal base (2 sepals with 2 glands, 1 with 1 gland, and 2 with no glands); petals ca. 35 mm long, 15 mm wide, narrowly triangular, apex obtuse, white; coronal rows 10, densely packed, grading into one another, all rows white fading to cream at base, the outer rows 1 mm diam. at base tapering to crumpled zigzag tips; the outermost 5 coronal rows ca. 35 mm long, filamentous; the next 2 rows ca. 7 mm long followed by a filamentous row ca. 3 mm long; innermost 2 coronal rows 2 mm long, stiff and upright; operculum plicate, ca. 5 mm long, white, the upper surface incurved and covering the limen; floral nectary arising just inside the base of the operculum, nectar secreting area a trough ca. 4 mm deep, 2 mm wide, lined with a yellow pad; limen red, arising from inner edge of the trough, 1 mm high, covered by the tip of the



operculum; androgynophore ca. 7 mm long from base to filament origin, white, from above slightly asymmetric; stamens 5, filaments ca. 7 mm long, green, anthers ca. 13 mm long, 6 mm wide, greenish yellow; style branches 3, ca. 15 mm long, 1 mm wide, white; stigmas discoid, revolute, ca. 7 mm wide, 5 mm long, creamy green; ovary ellipsoid, ca. 7 mm long, 6 mm diam., pale green with whitish specks, glabrous and shining. Fruit unknown.





# *Passiflora nebulosae* J. Restrepo & J. Ocampo 2019

## Subgenus *Tryphostemmatoides*

Distribution : Colombia.

Plant woody vine or liana. Stem slender subterete, glabrous, older woody stems 10–15 mm in diameter, green. Stipules narrowly setaceous, glabrous, 1.5–2 mm long, 0.5 mm wide, pale green. Tendrils slender, glabrous, bi or trifurcate in young branches with a small ligule between each bifurcation, occasionally ending in adhering disks, pale green. Petioles 7–8 mm long, glabrous, one pair of round minute sessile glands at junction to blade (about 1 mm long), green. Leaves entire ovate-oblong, coriaceous, glabrous, 55–66 mm long, 24–31 mm wide, margin entire, 3 to 5 minute glands on each margin, dark green above and pale green beneath when young, apex obtuse. Peduncles cauliflorous (occasionally axillary), bifurcate, 3–4 mm long, 1.5 mm diameter, green, glabrous; pedicels glabrous, 12–13 mm long, 1.5 mm diameter, green; bracts setaceous, 2 to 3, caducous, 1 mm long, 0.6 mm diameter, green, glabrous. Flowers 33–35 mm long (from the base of the nectary chamber to the ovary apex), 40–45 mm wide; hypanthium campanulate, 7–8 mm long, 10–11 mm diameter (at the base of the sepals), glabrous, green outside; sepals linear-lanceolate, 20–22 × 5–6 mm, light green beneath and above, awn at the apex (0.5 mm) glabrous; petals 20–21 × 3–4 mm, light green beneath and above, glabrous; corona filaments in three series, two major outer series spreading outward, yellow at base, purple in the upper middle part, apex white, the second outer series of filaments shorter (5–6 mm long) than the outermost series (10–11 mm long), filaments of inner series 3–4 mm long, capillary, slightly reflexed, white; operculum membranous, 4–6 mm high, nonplicate, crenate at the margin, white; limen cupuliform closely appressed to the androgynophore, 8–10 mm high, 2–2.1 mm wide, lacerate at the margin, white; androgynophore 26–28 mm long, 2 mm wide, light green, glabrous; ovary ovoid, 8.2 × 5.1 mm, 6-ribbed, green, glabrous; styles 10–11 mm long, light green; staminal filaments 4.8–5.0 mm long, light green. Fruit fusiform 25 × 6 mm, immature, angled, green, glabrous. Seeds not seen.



Daniel Mesa



Daniel Mesa



Daniel Mesa



***Passiflora obovata*** Killip 1936  
Subgenus *Tryphostemmatoides*



Distribution : Honduras.

.Plant glabrous throughout; stem subangular, dark; stipules soon deciduous; petioles about 2 cm. long, biglandular just above middle, the glands oblong, scarlike, about 1 mm. long; leaves obovate or oblong-obovate, 9 to 12 cm. long, 5 to 6.5 cm. wide, subabruptly acuminate at apex, slightly narrowed at base, entire, obscurely quintuplinerved (lateral nerves soon anastomosing, the midnerve prominent, the venation not elevated), subcoriaceous, lustrous, dark green; peduncles in



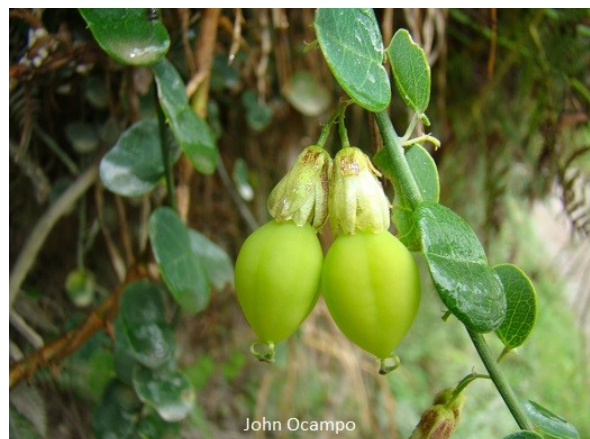
pairs, 2.5 to 3 cm. long, slender, articulate above middle; bracts minute, triangular-ovate, about 0.7 mm. long, acute, closely appressed to the peduncle and borne near its base; flowers about 4 cm. wide, greenish white; calyx patelliform; sepals oblong, 1.5 cm. long, 0.8 cm. wide, obtuse; petals linear-oblong, about 1.3 cm. long, 0.4 cm. wide; corona filaments in 2 series, the outer subequal to the petals, ligulate, filiform toward apex, the inner capillary, about 2 mm. long, minutely capitellate; operculum membranous, 4 mm. high, closely plicate, slightly incurved; limen annular, low; ovary globose, the young ovules apparently reticulate.

*Passiflora tryphostemmatoides* Harms 1894  
Subgenus *Tryphostemmatoides*



Distribution : Colombia.

Plant slender, glabrous throughout; stipules subulate, 2 mm. long; petioles up to 5 mm. long, very slender, bearing at extreme apex 2 minute, sessile glands; leaves transversely ovate or elliptic, rarely suborbicular, 1.2 to 1.8 cm. long, 1.5 to 3 cm. wide, rounded or truncate, or rarely slightly emarginate at apex, cordulate or truncate at base, 1-nerved, subcoriaceous, glaucescent beneath; peduncles solitary in the axils of the leaves, 0.5 to 1.5 cm. long, 2-flowered at apex, terminating in a slender tendril; pedicels 3 to 6 mm. long; bracts setaceous, 2 to 3 mm. long; flowers 1.5 cm. wide when fully expanded, yellowish green; sepals oblong, 5 to 7 mm. long, obtuse; petals oblong, 3 to 5 mm. long; filaments of corona in a single series, filiform, 2 to 3 mm. long, yellowish green, streaked with pink; operculum membranous, 1.5 mm. high, nonplicate, lacerate-cleft half its height; limen cupuliform; ovary subglobose; fruit subglobose or broadly ovoid, 6-angulate, up to 2.5 cm. long, 2 cm. in diameter, yellowish green, the wall brittle; seeds obovoid, very slightly flattened, 6 mm. long, 3 mm. wide, finely reticulate, axis slightly curved.





# *Passiflora pacifica* Linda Escobar 1989

## Subgenus *Tryphostemmatoides*

Distribution: Colombia.

Lianas con zarcillos delgados, ramificados, generalmente trifidos en el apice, ocasionalmente doblemente ramificados. Laminas foliares, enteras, lanceoladas, (5.6-) 11.2 (-15.5) cm de largo, (2.1-) 4.2 (-5.5) cm de ancho, agudas a redondeadas en el ápice cuneadas a redondeadas en la base, revolutas en las margenes, glabras; envés de la lamina glauco, con 2 (-4) nectarios redondeados ca. 1 mm diam. apareados en la base de la nervadura central, con venas prominentes rojizas; peciolo gruesos, 1.2-1.7 cm de largo; estipulas setaceas, 1-2 cm de largo, caducas. Inflorescencias caulinares, con pedunculos, 2-5 mm de largo; pedicelos apareados, 1.2-2.0 cm de largo, delgados; bracteadas(3) linear-lanceoladas, 1-2 mm de largo, esparcidas sobre el pedicelo; flores 2 (-6) campanuladas, pendulas, blancas; hipantio ca. 2 mm de largo, ca. 9 mm de ancho; sepalos ovados, 1.0-1.2 cm de largo, 3-4 mm de ancho, redondeados en el apice, externamente-verdosos, internamente blancos; petalos ca. 6 mm de largo, 2-3 mm de ancho, blancos; corona en 3 series, la serie exterior linear ca. 1.2 cm de largo, ca. 0.7 mm de ancho, las series interiores filamentosas, ca. 2 mm de largo, dispuestas irregularmente; operculo erecto, membranoso, sin pliegues. Polen con 6 colpos que se unen en los polos, formando 3 pseudo-operculos. No se conocen los frutos.



# *Passiflora arbelaezii* L. Uribe 1957

## Subgenus *Tryphostemmatoides*

Distribution: Nicaragua to Colombia.

Planta trepadora, humilde, glabra en todos sus órganos. Tallo delgado, surcado

longitudinalmente con los ángulos intermedios convexos. Estípulas triangular-lanceoladas, de cerca de 1 mm. De largo, acuminadas, persistentes; peciolo muy delgado, de 1,8-2,3 cm. de largo, provisto apicalmente de 3-4 pares de glándulas oblongas u ovaladas, concavas, de las cuales a veces se anastomosan algunas. Lámina de la hoja muy delgada, membranacea, glauca en el envés, ampliamente ovalada o aun suborbicular, de 1,8-3,4 cm. de largo y ancho, subcorazonada en la base, redondeada y emarginada en el vértice. Margen en los bordes, con diminutas costillas blancas en ambas caras solo visibles con el microscopio, eo], nervio central terminado en el

ápice de la hoja en una pequeña glandulilla. Inflorescencia axilar, compuesta de 2 flores: pedunculo común muy largo (4,5-6 cm.) , terminado en un cirro finísimo bastante largo, y dividido en dos pedicelos de 1,8-2,3 cm. de largo que llevan esparcidas y alternadas 3 bractéolas linear-lanceoladas. Flores con el tubo del cáliz pateliforme y muy reducido; sépalos verdosos, linear-lanceolados mas o menos agudos en el vértice. de 17 mm. de largo por 4 mm. de ancho; pétalos verde-amarillentos tan largos como los sépalos pero algo mas angostos, redondeados u obtusos en el ápice, con fina reticulación muy visible al trasluz; corona formada ordinariamente por 3 series de filamentos: la exterior los tiene gruesos y largos de 12 mm., las dos interiores (que no siempre se distinguen táctilmente entre si) los tienen capilares y de solo 2,5 mm. de largo; operculo liso, de 2 mm. de alto, ligeramente fimbriado; limen muy semejante al operculo; androginoforo de 9 mm. de largo, muy robusto: en su mitad superior se desprenden los estambres de filamentos planos unidos basalmente en una pequeña membrana, y anteras oblongo-ovoides, planas, redondeadas en ambos extremos, de 3 x 2 mm.; ovario ovoide, de 3-8 basi subcordata, ápice rotundata et emarginata, costa apice glandula minuta ornata. INFLORESCENTIA axillaris 2-flora. FLORES: pedunculus communis sat longus (usque ad 6 cm.), apice cirrhiferus et dichotome divisus. pedicello bracteolis setaceis, sparsis, persistentibus praedito; calycis tubus brevissimus; sepala lineari-lanceolata, acuta vel subacuta, circ. 2 cm. longa; petala conformia sed apice obtusa vel rotundata; corona 3-seriata: extima filamentis crassis fere 12 mm. longis, intimae vix inter se diversae, filamentis minimis capillaribus; operculum non plicatum, superne leviter fimbriatum; limen operculo simile; ovarium ovoideum. stylis longissimis coronatum, stigmate lateraliter collocato et grosse capitato. FRUCTUS ignotus.

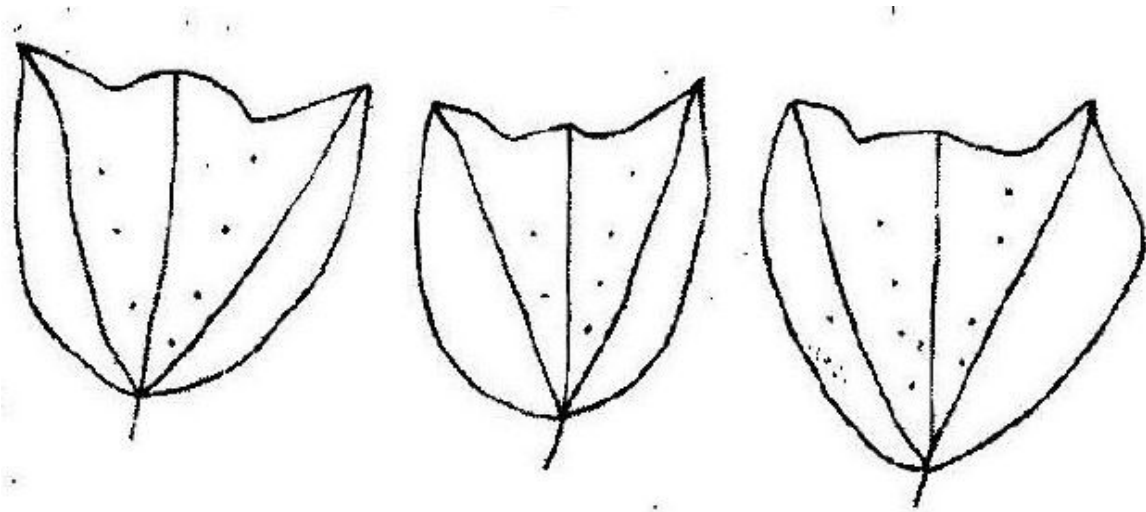




***Passiflora maestrensis*** M.E. Duharte 1985  
Subgenus *Decaloba* Supersection *Decaloba*

Distribution: Cuba.

Tallos glabrescentes 5-6 estriados. Hojas 2,4-4,8 cm de largo y 3,5-4 cm ancho, subcoriáceas glabrescentes, obovada en la parte inferior de la lámina, bilobulada hacia la parte superior (lunulada) a trilobata (lobulo medio generalmente nulo o muy breve), lobulos laterales agudos y levemente mucronados, lobulo medio redondeado o nulo, la base redondeada. Flores en pares rojo palidas, sépalos y pétalos oblongos ; los sépalos de 2-2,5 cm de largo, 3-4 mm de ancho, los pétalos 2-3 cm de largo y 5-8 mm de ancho-ginoforos de 2-3 cm de largo ; paracolora simple con segmentos cilindríformes aleanados amarillo-verdosos. Ovarios elípticos.



*Passiflora cocuyensis* JR Kuethe, H D Bernal, M  
Molinari & M Vecchia 2024  
Subgenus *Passiflora* Supersection *Stipulata* Section  
*Granadillastrum*

Distribution: Colombia

A wiry tendrillate vine, 4–7 m long, semi-woody at base, glabrous throughout.

*Stems* terete, green; internodal distance 10–15 cm. *Stipules* 4.2–6.1 × 2.4–3.5 cm, semi-ovate to caudate, obliquely cordate at base, terminating in a small mucro, margins entire, occasionally becoming serrate in lower half, green. *Petioles* 2–4 cm long, caniculate only in the upper portion between the nectaries, bearing 4(–5) conspicuous nectaries arranged in two opposite



MAURITIUS PINXIT A. D. MMXIX ©

pairs, pairs located just below (<0.6 cm) the blade, the fifth (if present) single just below the bottom pair, long ligulate to filiform, 4–5 mm in length, light green. *Leaf blade* 7.5–12.7 × 6.0–10.5 cm, 3-lobed, lobation initiated at about 1.5–2.2 cm distance from base, lobes 6.0–10.5 × 1.0–1.8 cm, ovate or ovate-lanceolate, lateral lobes and intermediate lobes subequal in length, acuminate and very slightly mucronate at apex, very broadly to squarely cordate at base, margin entire with the exception of having 1–4 ciliate glands present within the sinuses, ciliates 1–2 mm long, foliar texture membranous, green on both sides. *Inflorescence* solitary, very showy, borne on long peduncles. *Peduncles* 15–20 cm long, pendent, green, articulate 7–8 mm below the base of the flower. *Bracts* 1.0–1.4 × 0.6–0.8 cm, ovate-oblong, slightly cordate at base, acute at apex, margin entire, green. *Flower* 6.5–7.5 cm diam., deep red to deep purple-red; hypanthium 1.3–1.5 × 0.8–1.0 cm, urceolate-tubular, pale green outside, yellow-green inside; *sepals* 3.2–3.6 × 0.7–0.9 cm, linear lanceolate, obtuse at apex, green abaxially, deep red adaxially, dorsally corniculate just below the apex, awn 5–8 mm long, green to reddish, thin; *petals* 3.3–3.7 × 0.5–0.7 cm, subequal to sepals, linear lanceolate, narrowly obtuse at apex, deep red on both sides, membranous; corona composed of 4 filamentose series, deep red, arranged in 4 series of filaments; the outer series the longest, 1.0–1.2 cm long, filiform, red, slightly out-facing; the two proceeding series slightly shorter, 0.8–0.9 cm long, red, filiform, erect; inner series the shortest, 0.4–0.6 cm long, facing inwards and slightly curved up against the androgynophore, deep red in colour; operculum 3–4 mm long, fleshy, dependent and curved inwards into the base of hypanthium, reddish, margin slightly crenulate at apex; limen whitish green, erect around the base of androgynophore, white with a slight pinkish rim at apex; *androgynophore* 4–5.5 cm long, green with reddish specks; anthers 8–10 mm long, pale yellow; *ovary* 1.2–1.4 × 3–5 mm, ovate, glabrous to glabrescent, green. *Fruit* 3.4–5.8 × 2.5–4.2 cm, ellipsoid or ovate to oval, rounded at apex, glaucous, green becoming slightly yellowish when mature, inedible; mesocarp white; arils whitish. *Seeds* dark brown [not measured].



H Van Halst



*Passiflora munzii* S. Tillet Ined.

Distribution: Venezuela.







***Passiflora populifolia*** Triana & Planch. 1873  
*Subgenus Passiflora Supersection Stipulata Section*  
*Granadillastrum*

Distribution: Colombia.

glaberrima, ramis subtetragonis non alatis, foliis late ovato-cordatis acuminatis acutis integerrimis quinquenerviis semiadultis membranaceis, petiolis 4-6-glandulosis; stipulis amplis semicordatis acute cuspidatis, pedicellis axillaribus solitariis v. geminis petiolum sub-æquantibus; bracteis involucelli a flore parum remotis liberis ovato-oblongis cuspidatis integris alabastris junioribus multo brevioribus, laciniis calycinis sub apice mucrone corniformisetaceo ornatis, floribus evolulis ignotis. Ibagué, estancias de Tolima (Goudot).



*Passiflora populifolia* is considered by Kew like a synonym of *Passiflora oerstedii*, but in Colombia it is considered like a valid species.



***Passiflora caduca*** Hernandez & Mac Dougal ined  
Subgenus *Decaloba* Supersection *Decaloba* Section  
*Decaloba*

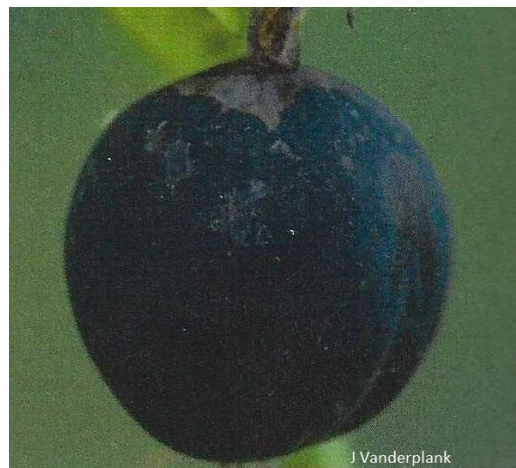
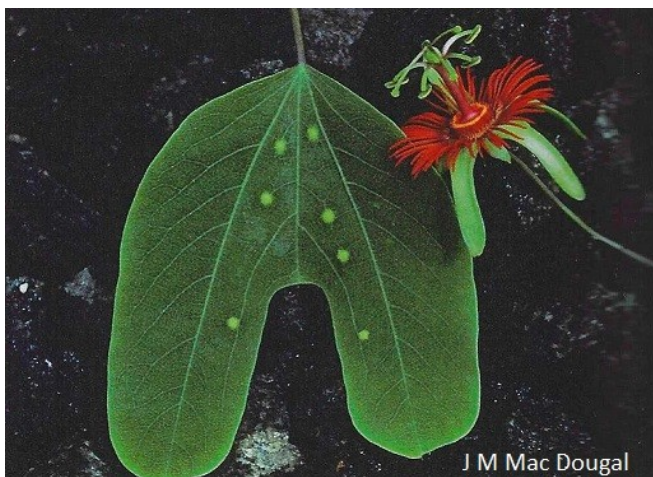
Distribution: Colombia.





***Passiflora aff mexicana***  
Subgenus *Decaloba* Supersection *Decaloba*

Distribution: Arizona.





## *Passiflora sp utinga*

Plant found by François Thuys and Christian Houel between Bonito and Utinga in the state of Bahia, blooms only at night, quite similar to *Passiflora mucronata* and *Passiflora sylvestris* which bloom in the evening, night and early morning (like *Passiflora setacea* and *Passiflora recurva*). All these plants have the operculum curved relative to the center of the flower to allow the passage of the heads of bats so that they carry out pollination at night. This MS also has different bracts than these other species.

